

Trincia

TR26



www.alpego.com

Tel +39 0444/64.61.00

Fax +39 0444/64.61.99

e-mail: info@alpego.com

ALPEGO s.p.a.

Sede Amministrativa:

Via Torri di Confine, 6 36053 GAMBELLARA (VICENZA) - ITALY

Sede Legale:

Via Giovanni e Giuseppe Cenzato, 9 36045 LONIGO (VICENZA) - ITALY

Capitale sociale €2.000.000 i.v.

Cod. Fisc. / Part. IVA IT02009840246

R.E.A. 199795/VI/1996

Reg. Imp.VI N° 22374/VI/1996

N. Mecc. VI 011754

Copyright © 2009 Alpego s.p.a. ®

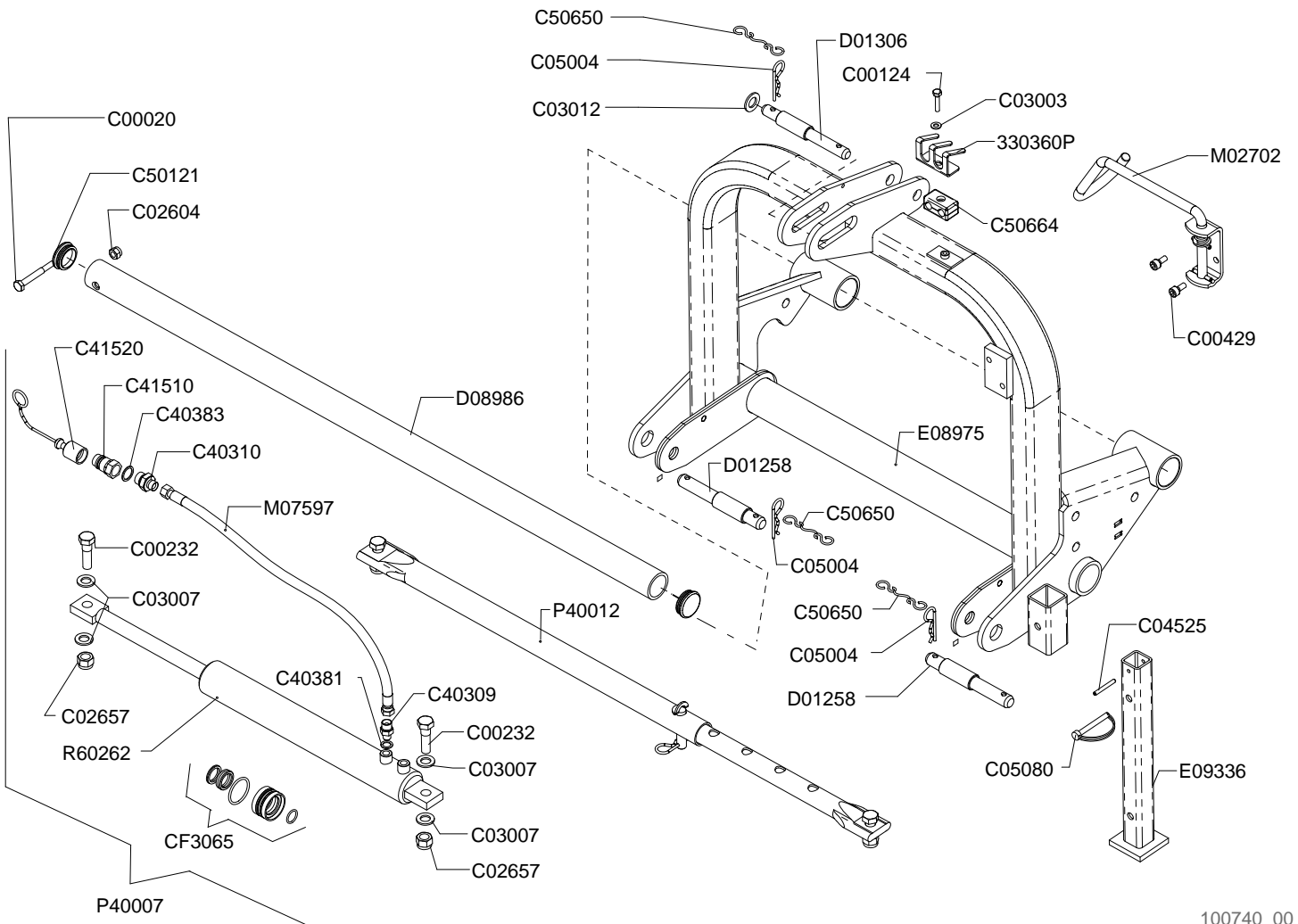
Tutti i diritti sono riservati. È vietata espressamente la ristampa o l'uso non autorizzato senza permesso scritto dalla Alpego s.p.a.

Tous droits réservés. Toute réimpression ou utilisation non autorisée sans la permission écrite de la Alpego s.p.a. est formellement interdite.

Alle Rechte vorbehalten. Nachdruck, Vervielfältigung und Verbreitung, auch auszugsweise, ist ohne schriftliche Genehmigung der Alpego s.p.a.

All rights reserved. Any reprinting or unauthorized use without the written permission of Alpego s.p.a. is expressly prohibited.

Todos los derechos reservados. Toda reproducción o uso no autorizado sin el consentimiento escrito de Alpego s.p.a. quedan expresamente prohibidos.



100740_00



Attacco a 3 punti

3 Point linkage

Attelage a trois points

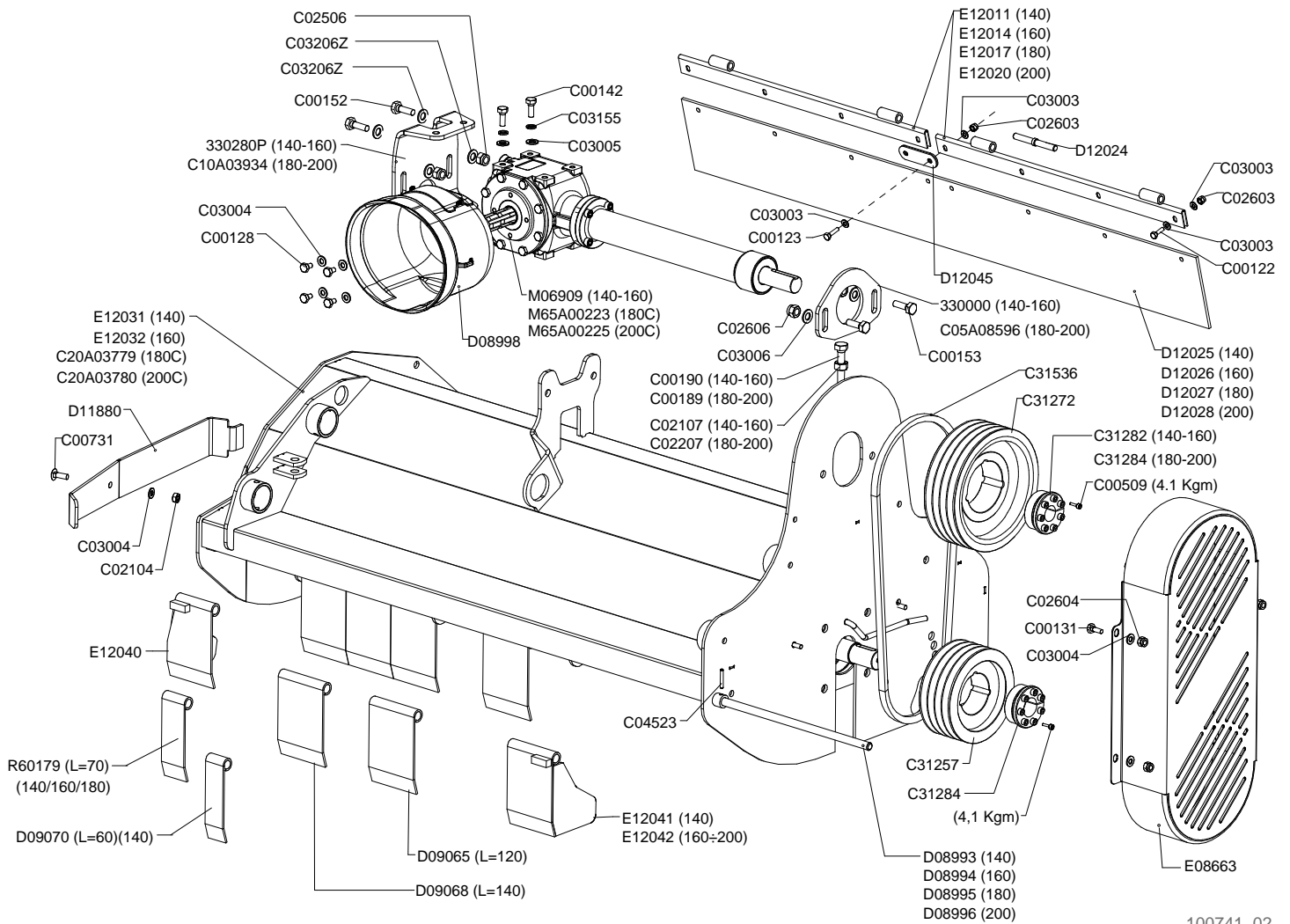
Schraubenbefestigung

Drawing Code:

100740_0

Accessories:

N°	Code	Old.	Descrizione /Description	GB	FR	D	E
#	C10A00892	330360P	PORTACONDOTTE 2 SEDI 04643 SP3MM ZINC.	-	-	-	-
#	M80A00017	C00020	VITE TE 88 PG FP M10X80 ZINC UNI 5737	SCREW	VIS	SCHRAUBE	TORNILLO
#	M80A00113	C00124	VITE TE 88 PG FT M8X35 ZINC UNI 5739	SCREW	VIS	SCHRAUBE	TORNILLO
#	M80A00181	C00232	VITE TE 88 PF FP M16X1,5X55 ZINC UNI 573	SCREW	VIS	SCHRAUBE	TORNILLO
#	M80A00242	C00429	VITE TCEI PG M10X20 ZINC UNI 5931	SCREW	VIS	SCHRAUBE	TORNILLO
#	M85A00077	C02604	DADO AUTOBLOC ALTO 8 M10 H=11.5 UNI 7473	NUT	BOULONS	NUT	DADO
#	M85A00089	C02657	DADO AUTOBLOC ALTO 8 M16X1,5 H=18 UNI 7473	NUT	BOULONS	NUT	DADO
#	M90A00005	C03003	RONDELLA PIANA D.8,4 DIN125-A ZINC.	WASHER	RONDELLE	UNTERLEGSSCHEIBE	ARANDELLA
#	M90A00010	C03007	RONDELLA PIANA D.17 DIN125-A ZINC.	WASHER	RONDELLE	UNTERLEGSSCHEIBE	ARANDELLA
#	M90A00015	C03012	RONDELLA PIANA D.19 DIN 125-A ZINC.	WASHER	RONDELLE	UNTERLEGSSCHEIBE	ARANDELLA
#	MB0A00017	C04525	SPINA ELASTICA D.6X50	SOCKET	GOUPILLE	STECKER	PASADOR
#	MB0A00087	C05004	SPINA A MOLLA D.4	SOCKET	GOUPILLE	STECKER	PASADOR
#	MB0A00101	C05080	SPINOTTO PER MOTOZAPPA D.10X60 UTILE	PIN	GOUPILLE	STIFT	PASADOR
#	H35A00009	C40309	NIPLES RIDUZ.1/4 3/8	NIPLES	NIPLES	NIPLES	NIPLES
#	H35A00010	C40310	NIPLES RIDUZ.1/2 3/8	NIPLES	NIPLES	NIPLES	NIPLES
#	H35A00041	C40381	RONDELLA RAME 1/4 D.13.5	WASHER	RONDELLE	UNTERLEGSSCHEIBE	ARANDELLA
#	H35A00043	C40383	RONDELLA RAME 1/2 D.21	WASHER	RONDELLE	UNTERLEGSSCHEIBE	ARANDELLA
#	H50A00005	C41510	INNESTO RAPIDO MASCHIO ATT.1/2 F NV	COUPLING	ACCOUPEMENT	KUPPLUNG	COMPROMISO
#	G10A00002	C41520	TAPPO PROT.INNESTO RAPIDO 1/2 MASCHIO BLU	PLUG	BOUCHON	STOEPESEL	ENCHUFE
#	M79A00002	C50650	GOMMINO CON ANELLI L.240 MM.	RUBBER	CAOUTCHOUC	BELAG	GOMAS
#	G10A00033	C50664	"COLLARE FERMATUBI POLIPROP. 2 X1/4" (COMPL)"	METAL RING	COLLARE	METALLRING	COLLAR
#	SCOA00070	CF3065	SERIE GUARNIZIONI CIL.TR20/TR25 D50 D25	SERIES	SÉRIE	SERIE	SERIE
#	M15A00013	D01258	PERNO ATTACCHI D.22-28 X186 ZINCATO.	PIN	PIVOT	STIFT	PIN
#	M15A00015	D01306	PERNO D.19-25X190 ZINC.	PIN	PIVOT	STIFT	PIN
#	C15A00522	D08986	TUBO GUIDA TR26 D50X1280 ZINC	TUBE	TUBE	ROHR	TUBO
#	C20A01552	E08975	TELAIO TERZO PUNTO TR26	FRAME	CHASSIS	RAHMEN	MARCO
#	C20A01606	E09336	GAMBA D'APPOGGIO TRINCIA H=320	LEG	BEQUILLE	BEIN	PATA
#	M79A00013	M02702	GANCIO SUPP. CARDANO COMPL.***	HOOK	ATTACHE	HAKEN	ENGANCHE
#	H75A00060	M07597	"TUBO IDR FD3/8""-R1AT 1/4""X2200-FD3/8""	TUBE	TUBE	ROHR	TUBO
#	SA5A00004	P40007	SPOSTAMENTO IDRAULICO TR26	MOVEMENT	MOUVEMENT	MOVEMENT	MOVIMIENTO
#	S50A00006	P40012	SPOSTAMENTO MECCANICO TR26	MOVEMENT	MOUVEMENT	MOVEMENT	MOVIMIENTO
#	H80A00057	R60262	CILINDRO IDRAULICO TR25 (04960)	CYLINDER	CYLINDRE	ZYLINDER	CILÍNDRICA





Telaio e trasmissione
Frame and pulley transmission
Chassis-transmission
Rahmen riemenantriebe

Drawing Code: **100741_2**

Accessories:

N°	Code	Old.	Descrizione /Description	GB	FR	D	E
-	C05A03174	330000	FLANGIA SUPP MOLT. MUL 03307 8MM	FLANGE	FLANC	FLANSCH	FLANGE
-	C10A00852	330280P	SEDE MULTIPL(170) TR 04459 SP8MM	SEAT	SIEGE	SITZ	SEDE
-	M80A00111	C00122	VITE TE 88 PG FT M8X25 ZINC UNI 5739	SCREW	VIS	SCHRAUBE	TORNILLO
-	M80A00112	C00123	VITE TE 88 PG FT M8X30 ZINC UNI 5739	SCREW	VIS	SCHRAUBE	TORNILLO
-	M80A00116	C00128	VITE TE 88 PG FT M10X16 ZINC UNI 5739	SCREW	VIS	SCHRAUBE	TORNILLO
-	M80A00118	C00131	VITE TE 88 PG FT M10X25 ZINC UNI 5739	SCREW	VIS	SCHRAUBE	TORNILLO
-	M80A00129	C00142	VITE TE 88 PG FT M12X30 ZINC UNI 5739	SCREW	VIS	SCHRAUBE	TORNILLO
-	M80A00137	C00152	VITE TE 88 PG FT M14X35 ZINC UNI 5739	SCREW	VIS	SCHRAUBE	TORNILLO
-	M80A00138	C00153	VITE TE 88 PG FT M14X40 ZINC UNI 5739	SCREW	VIS	SCHRAUBE	TORNILLO
-	M80A00166	C00189	VITE TE 88 PG FT M16X65 ZINC UNI 5739	SCREW	VIS	SCHRAUBE	TORNILLO
-	M80A00167	C00190	VITE TE 88 PG FT M16X70 ZINC UNI 5739	SCREW	VIS	SCHRAUBE	TORNILLO
-	M80A00258	C00509	VITE TCEI 12.9 M8X25 UNI 5931	SCREW	VIS	SCHRAUBE	TORNILLO
-	MF0A00001	C00731	BULLONE TTQDE M10X30 UNI 5732 ZINC.BIANC	BOLT	BOULON	FLANSCH	BRIDA
-	M85A00027	C02104	DADO NORMALE 8 PG M10 UNI 5588 ZINC	NUT	BOULONS	NUT	DADO
-	M85A00030	C02107	DADO NORMALE 8 PG M16 UNI 5588 ZINC	NUT	BOULONS	NUT	DADO
-	M85A00045	C02207	DADO BASSO 8 PG M16 UNI 5589 ZINC.	NUT	BOULONS	NUT	DADO
-	M85A00059	C02506	DADO AUTOBLOC BASSO 8 PG M14 H=14 UNI 7474	NUT	BOULONS	NUT	DADO
-	M85A00075	C02603	DADO AUTOBLOC ALTO 8 M8 H=10.6 UNI 7473	NUT	BOULONS	NUT	DADO
-	M85A00077	C02604	DADO AUTOBLOC ALTO 8 M10 H=11.5 UNI 7473	NUT	BOULONS	NUT	DADO
-	M85A00079	C02606	DADO AUTOBLOC ALTO 8 M14 H=16 UNI 7473	NUT	BOULONS	NUT	DADO
-	M90A00005	C03003	RONDELLA PIANA D.8,4 DIN125-A ZINC.	WASHER	RONDELLE	UNTERLEGSCH	ARANDELLA
-	M90A00007	C03004	RONDELLA PIANA D.10,5 DIN125-A ZINC.	WASHER	RONDELLE	UNTERLEGSCH	ARANDELLA
-	M90A00008	C03005	RONDELLA PIANA D.13 DIN125-A ZINC.	WASHER	RONDELLE	UNTERLEGSCH	ARANDELLA
-	M90A00009	C03006	RONDELLA PIANA D.15 DIN125-A ZINC.	WASHER	RONDELLE	UNTERLEGSCH	ARANDELLA
-	M90A00044	C03155	RONDELLA GROWER RINF. D.12 ASA B27	WASHER	RONDELLE	UNTERLEGSCH	ARANDELLA
-	M90A00052	C03206Z	DISCO ELAST. D.14,2X28X1.5 ZINC+DEIDR DIN 2093	DISC	DISQUE	SCH	DISCO
-	MB0A00015	C04523	SPINA ELASTICA D.6X40	SOCKET	GOUPILLE	STECKER	PASADOR
-	C05A08596		FLANGIA SUPP MOLT. R241 SU TR26	FLANGE	FLANC	FLANSCH	FLANGE
-	C10A03934		SEDE MULTIPL. R241 SU TR26	SEAT	SIEGE	SITZ	SEDE
-	C20A03779		TELAIO TR25-180C (COMPLESSIVO)	FRAME	CHASSIS	RAHMEN	MARCO
-	C20A03780		TELAIO TR25-200C (COMPLESSIVO)	FRAME	CHASSIS	RAHMEN	MARCO
-	M60A00004	C31257	PULEGGIA PER CALETT. 190X4 SPB D.80	PULLEY	POULIE	RIEMENSCH	POLEAS
-	M60A00008	C31272	PULEGGIA PER CALETT. 250X4 SPB D.80	PULLEY	POULIE	RIEMENSCH	POLEAS
-	M75A00004	C31282	CALETTATORE VK-156 DI=35 DE=80	KEYED FLANGE	CALE	VERKEILER	CALENTADOR
-	M75A00005	C31284	CALETTATORE VK-156 DI=40 DE=80	KEYED FLANGE	CALE	VERKEILER	CALENTADOR
-	M55A00022	C31536	"CINGHIA ""XPB""1500 DENTEL (TR25)"	BELT	CEINTURE	RIEMEN	CORREA
-	C00A00308	D08993	ASTA PORTA BANDIERINE D16 TR25-140 ZINC.	ROD	POLE	STIFT	POLOS
-	C00A00309	D08994	ASTA PORTA BANDIERINE D16 TR25-160 ZINC.	ROD	POLE	STIFT	POLOS
-	C00A00310	D08995	ASTA PORTA BANDIERINE D16 TR25-180 ZINC.	ROD	POLE	STIFT	POLOS
-	C00A00311	D08996	ASTA PORTA BANDIERINE D16 TR25-200 ZINC.	ROD	POLE	STIFT	POLOS
-	G10A00051	D08998	PROT. OVALE 210X275XH150 FORATA	PROTECTION	PROTECTION	SCHUTZ	PROTECCIÓN
-	C10A02315	D09065	BANDIERINA DI PROT. 120X4X182 ZINCATA	PLATE	DRAPEAUX	BLECH	BANDERIN
-	C10A02318	D09068	BANDIERINA DI PROT. 140X4X182 ZINCATA	PLATE	DRAPEAUX	BLECH	BANDERIN
-	C10A02320	D09070	BANDIERINA DI PROT. 60X4X182 ZINCATA	PLATE	DRAPEAUX	BLECH	BANDERIN
-	C10A02783	D11880	PROTEZIONE EST. TR-25	PROTECTION	PROTECTION	SCHUTZ	PROTECCIÓN
-	M15A00138	D12024	PERNO CERNIERA GOMMA POST.D.12 D.15 L.110 TR25	PIN	PIVOT	STIFT	PIN
-	G05A00027	D12025	PROTEZIONE GOMMA POST. 1400X170X6 TR25 140	PROTECTION	PROTECTION	SCHUTZ	PROTECCIÓN
-	G05A00028	D12026	PROTEZIONE GOMMA POST. 1600X170X6 TR25 160	PROTECTION	PROTECTION	SCHUTZ	PROTECCIÓN
-	G05A00029	D12027	PROTEZIONE GOMMA POST. 1800X170X6 TR25 180	PROTECTION	PROTECTION	SCHUTZ	PROTECCIÓN

Copyright © 2009 Alpego s.p.a. ®

Tutti i diritti sono riservati. È vietata espressamente la ristampa o l'uso non autorizzato senza permesso scritto dalla Alpego s.p.a.
 Tous droits réservés. Toute réimpression ou utilisation non autorisée sans la permission écrite de la Alpego s.p.a. est formellement interdite
 Alle Rechte vorbehalten. Nachdruck, Vervielfältigung und Verbreitung, auch auszugsweise, ist ohne schriftliche Genehmigung der Alpego s.p.a.
 All rights reserved. Any reprinting or unauthorized use without the written permission of Alpego s.p.a. is expressly prohibited
 Todos los derechos reservados. Toda reproducción o uso no autorizado sin el consentimiento escrito de Alpego s.p.a. quedan expresamente prohibidos

30/05/2017

Telaio e trasmissione

Frame and pulley transmission

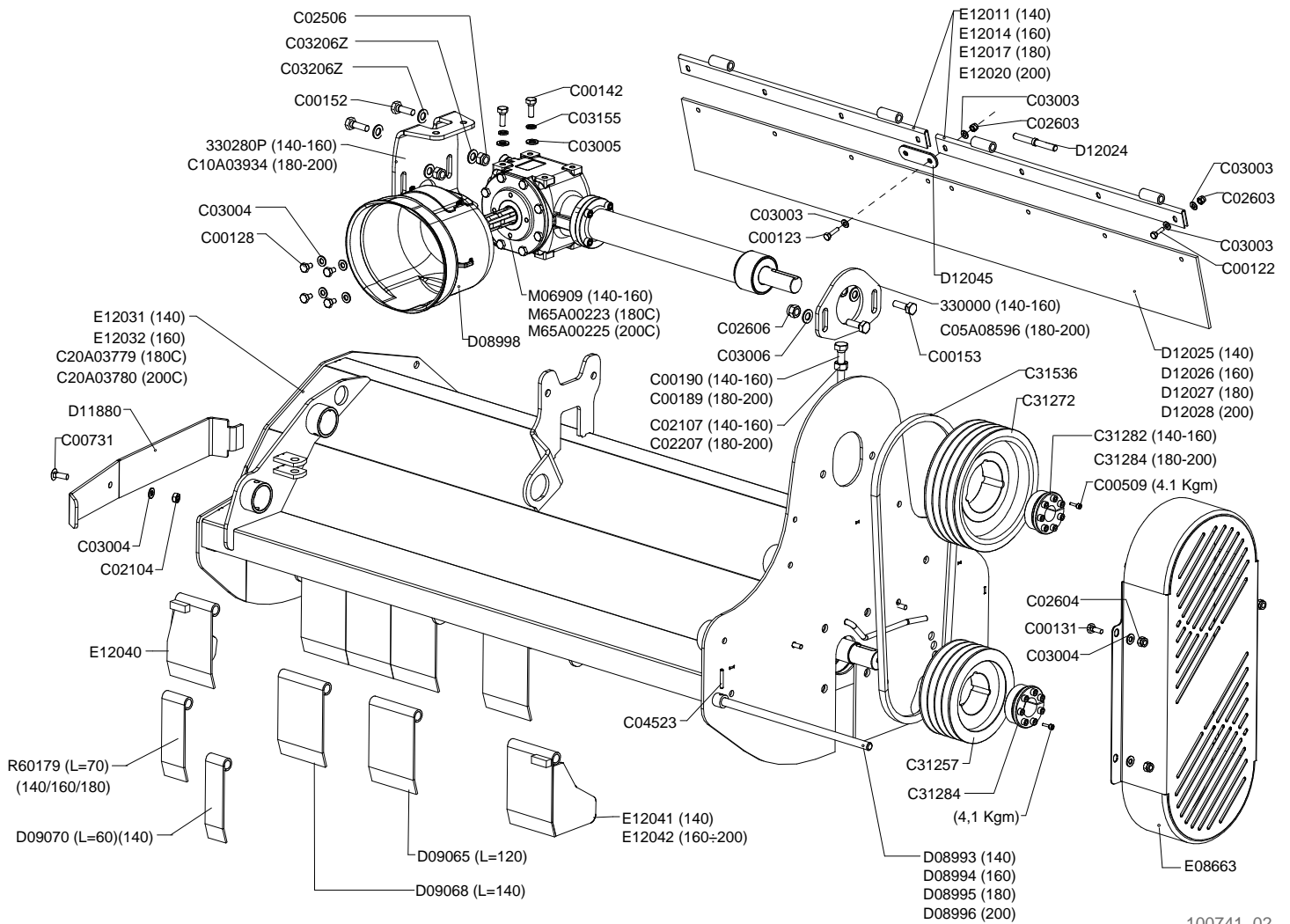
Chassis-transmission

Rahmen riemenantriebe

Drawing Code:

100741_2

Accessories:



100741_02



Telaio e trasmissione

Frame and pulley transmission

Chassis-transmission

Rahmen riemenantriebe

Drawing Code:

100741_2

Accessories:

N°	Code	Old.	Descrizione / Description	GB	FR	D	E
-	G05A00030	D12028	PROTEZIONE GOMMA POST. 2000X170X6 TR25 200	PROTECTION	PROTECTION	SCHUTZ	PROTECCIÓN
-	C05A06929	D12045	PIASTRINA COLLEGAM. CERNIERE TR25	METAL STRAP	METAL DEPLOYE	BANDEISEN	PLATILLO
-	C20A01497	E08663	CARTER COMPL. TR25 (140/200) ***	HOUSING	CARTER	GEHAUSE	CARTER
-	C20A01936	E12011	SUPPORTO GOMMA POSTERIORE TR25-140	SUPPORT	SUPPORT	STUTZE	APOYO
-	C20A01937	E12014	SUPPORTO GOMMA POSTERIORE TR25-160	SUPPORT	SUPPORT	STUTZE	APOYO
-	C20A01938	E12017	SUPPORTO GOMMA POSTERIORE TR25-180	SUPPORT	SUPPORT	STUTZE	APOYO
-	C20A01939	E12020	SUPPORTO GOMMA POSTERIORE TR25-200	SUPPORT	SUPPORT	STUTZE	APOYO
-	C20A01940	E12031	TELAIO TR25-140 (COMPLESSIVO)	FRAME	CHASSIS	RAHMEN	MARCO
-	C20A01941	E12032	TELAIO TR25-160 (COMPLESSIVO)	FRAME	CHASSIS	RAHMEN	MARCO
-	C20A01944	E12040	BANDIERINA ANT.CON RIPARO LATER.DX TR25 ZINC.	PLATE	DRAPEAUX	BLECH	BANDERIN
-	C20A01945	E12041	BANDIERINA ANT.120X182 CON RIPARO LATER.SX TR25-14 ZIN	PLATE	DRAPEAUX	BLECH	BANDERIN
-	C20A01946	E12042	BANDIERINA ANT.140X182 CON RIPARO LATER.SX TR25-16-20 z	PLATE	DRAPEAUX	BLECH	BANDERIN
-	M65A00086	M06909	MULTIPLIC. R231-1/3-RL-615-D35	MULTIPLIER	MULTIPLICATEUR	UEBERSETZUNGSGETRIEBE	MULTIPLICADOR
-	M65A00223		MULTIPLIC. R241-1/3-RL-780-D40	MULTIPLIER	MULTIPLICATEUR	UEBERSETZUNGSGETRIEBE	MULTIPLICADOR
-	M65A00225		MULTIPLIC. R241-1/3-RL-950-D40	MULTIPLIER	MULTIPLICATEUR	UEBERSETZUNGSGETRIEBE	MULTIPLICADOR
-	C10A03440	R60179	BANDIERINA DI PROT. 70X4 TR30 160-220	PLATE	DRAPEAUX	BLECH	BANDERIN

Rotore con supporti

Rotor and holder

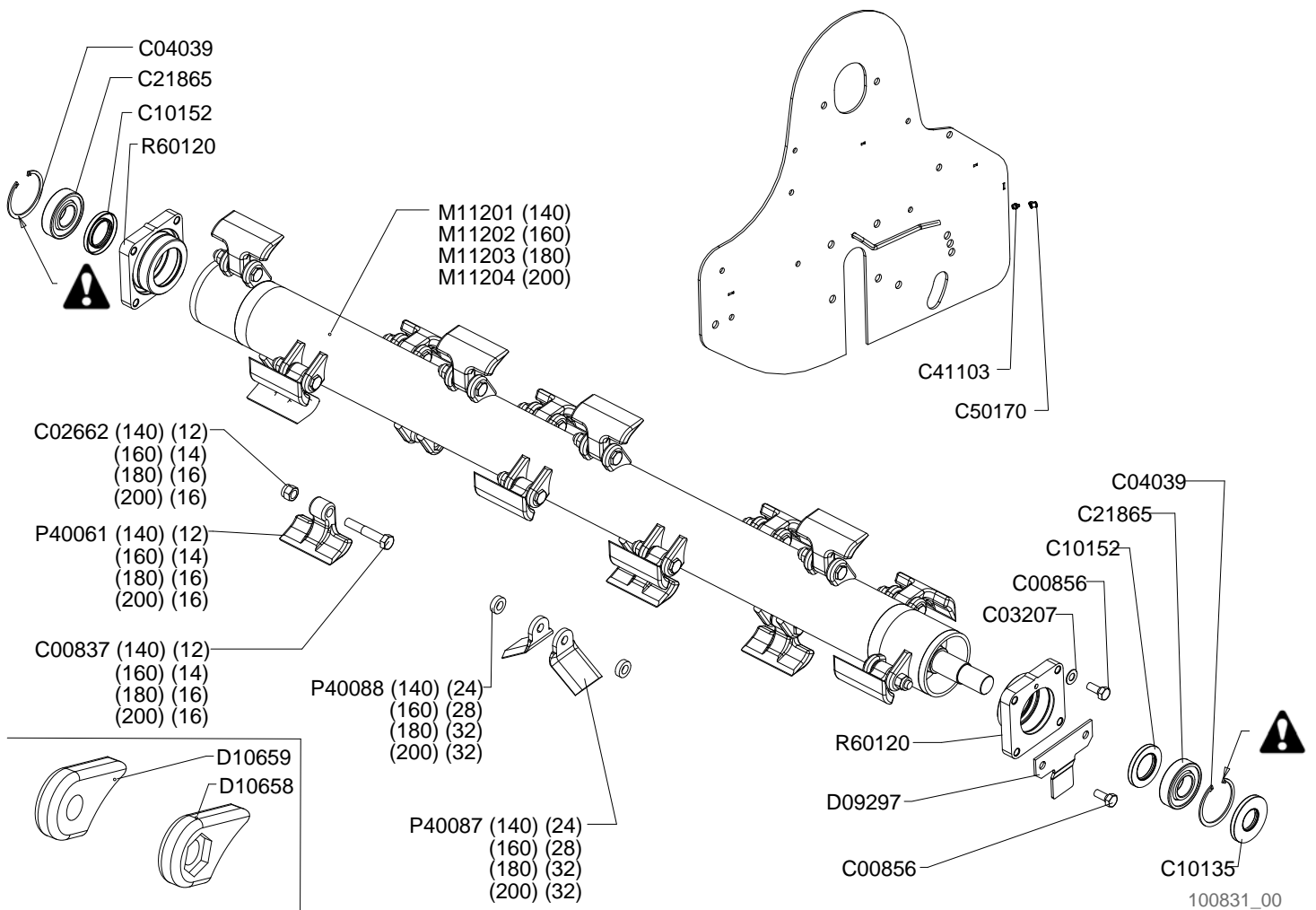
Rotor au support

Rotor - stutze

Drawing Code:

100831_0

Accessories:





Rotore con supporti

Rotor and holder

Rotor au support

Rotor - stutze

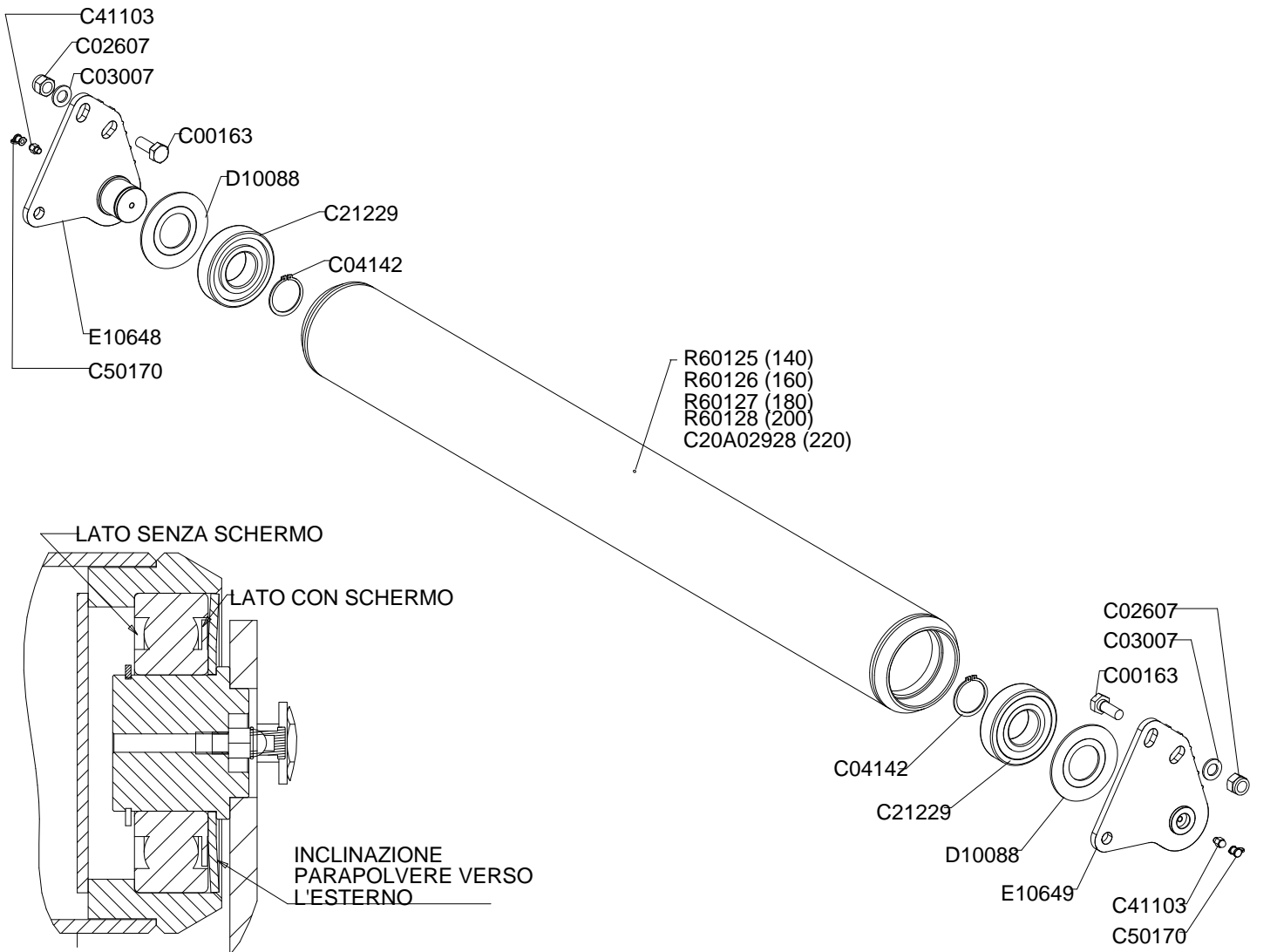
Drawing Code:

100831_0

Accessories:

N°	Code	Old.	Descrizione /Description
#	M80A00330	C00837	VITE TE 12.9 PF M18X1.5X100 FIL30 UNI 5738
#	M80A00347	C00856	VITE TE 10.9 PG FT M16X35 UNI 5739 (GEOMET)
#	M85A00094	C02662	DADO AUTOBLOC ALTO 8 M18X1.5 H=20 UNI 7473
#	M90A00053	C03207	DISCO ELAST. D.16,3X31.5X1.75 DIN 2093 ZINCO-LAMELLARE
#	MA0A00014	C04039	SEEGER FORO D.100 UNI 7437
#	H00A00052	C10135	PARAOLIO BASL D.45X100X10
#	H00A00065	C10152	PARAOLIO BASL D.55X90X10
#	M20A00106	C21865	CUSCINETTO OR.SFE 1309 ETN9 45X100X25
#	MJ5A00003	C41103	INGRASSATORE M8X1.25 DRITTO ESAGONO 11.
#	G00A00001	C50170	PROTEZIONE INGRASSATORE D.6MM ROSSO
#	C10A02363	D09297	PROTEZIONE SUPPORTO TL- TR25 sp5mm
#	B65A00037	D10658	ORECCHIETTA SP.18 FORO 18.5 ES. 28
#	B65A00038	D10659	ORECCHIETTA SP.18 CON FORO D.18.5
#	M10A00020	M11201	ROTORE TL-TR26-140 COMPL.MAZZE ALPEGO
#	M10A00022	M11202	ROTORE TL-TR26-160 COMPL.MAZZE ALPEGO
#	M10A00024	M11203	ROTORE TL-TR26-180 COMPL.MAZZE ALPEGO
#	M10A00026	M11204	ROTORE TL-TR26-200 COMPL.MAZZE ALPEGO
#	MK0A00212	P40061	MAZZA TRINCIA FORO=18.5 LARG=140 R=95
#	MK0A00221	P40087	COLTELLO UNIVERS. TRISAR D18.5 L70 R=95
#	C15A00801	P40088	DISTANZIALE FORO 19 H10.5 D35 (XCOLT.)
#	M35A00065	R60120	SUPPORTO ROTORE DS/SN TR25/TL30-180/200*

GB	FR	D	E
SCREW	VIS	SCHRAUBE	TORNILLO
SCREW	VIS	SCHRAUBE	TORNILLO
NUT	BOULONS	NUT	DADO
DISC	DISQUE	SCHEIBE	DISCO
SEEGER	SEEGER	SEEGER	SEEGER
SEALING RING	JOINT SPI	OELABDICHTUNG	PARAOLIO
SEALING RING	JOINT SPI	OELABDICHTUNG	PARAOLIO
BEARING	ROULEMENT	KUGELLAGER	COJINETE
GREASE NIPPLE	GRAISSOR	FETTBUECHSE	ENGRASADOR
PROTECTION	PROTECTION	SCHUTZ	PROTECCIÓN
PROTECTION	PROTECTION	SCHUTZ	PROTECCIÓN
WELDED PLATE	LAME	STREICHBLECH	OREJA
WELDED PLATE	LAME	STREICHBLECH	OREJA
ROTOR	ROTOR	ROTOR	ROTOR
ROTOR	ROTOR	ROTOR	ROTOR
ROTOR	ROTOR	ROTOR	ROTOR
ROTOR	ROTOR	ROTOR	ROTOR
HAMMER	MARTEAUX	HAMMERSCHLEGEL	MAZA/MARTILLO
BLADE	COUTEAU	MESSER	CUCHILLO
SPACER	ENTRETOISE	ABSTANDSTUECK	ESPACIADORES
SUPPORT	SUPPORT	STUTZE	APOYO



100637_01



Rullo posteriore
 Rear roller
 Rouleau posterieur
 Hinter Walze

Drawing Code: **100637_1**

Accessories:

N°	Code	Old.	Descrizione /Description
#	M80A00149	C00163	VITE TE 88 PG FT M16X40 ZINC UNI 5739
#	M85A00080	C02607	DADO AUTOBLOC ALTO 8 M16 H=18 UNI 7473
#	M90A00010	C03007	RONDELLA PIANA D.17 DIN125-A ZINC.
#	MA0A00041	C04142	SEEGER ALBERO D.50 UNI 7435
#	C20A02928		RULLO POST.TR26/TL33/31-220***
#	M20A00049	C21229	CUSCINETTO 6310 Z C3 (CL- B) 50X110X27
#	MJ5A00003	C41103	INGRASSATORE M8X1.25 DRITTO ESAGONO 11.
#	G00A00001	C50170	PROTEZIONE INGRASSATORE D.6MM ROSSO
#	C10A02477	D10088	RONDELLA PARAPOLVERE D.109 D.51 SP3MM
#	C20A01788	E10648	SUPPORTO RULLO DES TL30A-32A 31-33
#	C20A01789	E10649	SUPPORTO RULLO SIN TL30A-32A-31-33
#	C20A02488	R60125	RULLO POST.TR25/TL30-140***
#	C20A02489	R60126	RULLO POST.TR25/TL30-160***
#	C20A02490	R60127	RULLO POST.TR25/TL30-180***
#	C20A02491	R60128	RULLO POST.TR25/TL30-200***

GB	FR	D	E
SCREW	VIS	SCHRAUBE	TORNILLO
NUT	BOULONS	NUT	DADO
WASHER	RONDELLE	UNTERLEGSCHIEBE	ARANDELLA
SEEGER	SEEGER	SEEGER	SEEGER
ROLLER	ROULEAU	WALZE	RODILLO
BEARING	ROULEMENT	KUGELLAGER	COJINETE
GREASE NIPPLE	GRAISSOR	FETTBUECHSE	ENGRASADOR
PROTECTION	PROTECTION	SCHUTZ	PROTECCIÓN
WASHER	RONDELLE	UNTERLEGSCHIEBE	ARANDELLA
SUPPORT	SUPPORT	STUTZE	APOYO
SUPPORT	SUPPORT	STUTZE	APOYO
ROLLER	ROULEAU	WALZE	RODILLO
ROLLER	ROULEAU	WALZE	RODILLO
ROLLER	ROULEAU	WALZE	RODILLO
ROLLER	ROULEAU	WALZE	RODILLO

Cofano posteriore

Rear bonnet

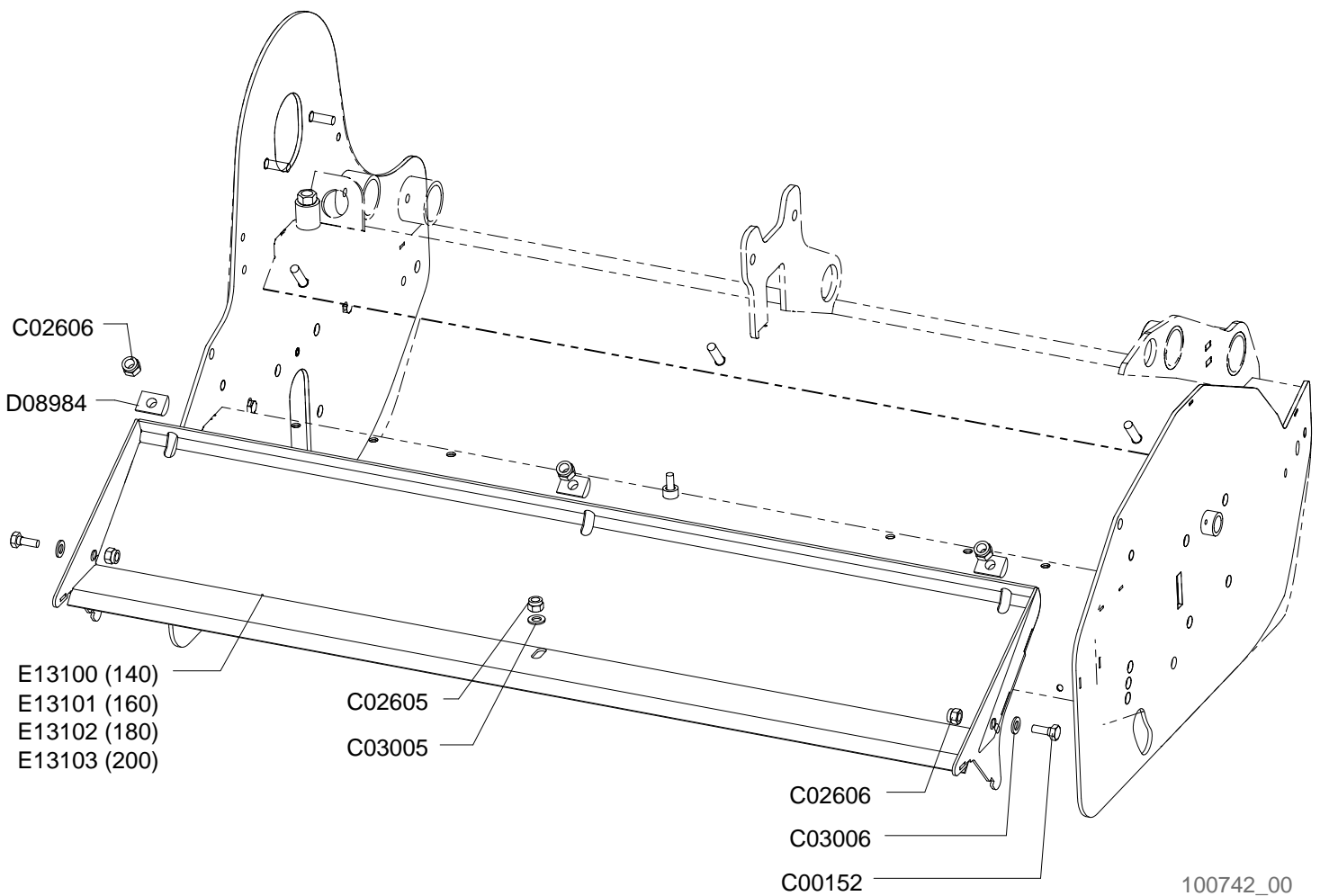
Capot arriere

Gehäuseklappe hinter

Drawing Code:

100742_1

Accessories:





Cofano posteriore

Rear bonnet

Capot arriere

Gehäuseklappe hinter

Drawing Code:

100742_1

Accessories:

N°	Code	Old.	Descrizione /Description
#	M80A00137	C00152	VITE TE 88 PG FT M14X35 ZINC UNI 5739
#	M85A00078	C02605	DADO AUTOBLOC ALTO 8 M12 H=14 UNI 7473
#	M85A00079	C02606	DADO AUTOBLOC ALTO 8 M14 H=16 UNI 7473
#	M90A00008	C03005	RONDELLA PIANA D.13 DIN125-A ZINC.
#	M90A00009	C03006	RONDELLA PIANA D.15 DIN125-A ZINC.
#	C15A00521	D08984	BLOCCETTO RAGGIO 15 L=40 FORO 14.5***
#	C20A02061	E13100	COFANO TR26-140
#	C20A02062	E13101	COFANO TR26-160
#	C20A02063	E13102	COFANO TR26-180
#	C20A02064	E13103	COFANO TR26-200

GB	FR	D	E
SCREW	VIS	SCHRAUBE	TORNILLO
NUT	BOULONS	NUT	DADO
NUT	BOULONS	NUT	DADO
WASHER	RONDELLE	UNTERLEGSCHIEBE	ARANDELLA
WASHER	RONDELLE	UNTERLEGSCHIEBE	ARANDELLA
BLOCK	BLOC	BLOCK	BLOQUE
BONNET	CAPOT	MOTORHAUBE	CAPÓ
BONNET	CAPOT	MOTORHAUBE	CAPÓ
BONNET	CAPOT	MOTORHAUBE	CAPÓ
BONNET	CAPOT	MOTORHAUBE	CAPÓ

Moltiplicatore M06909

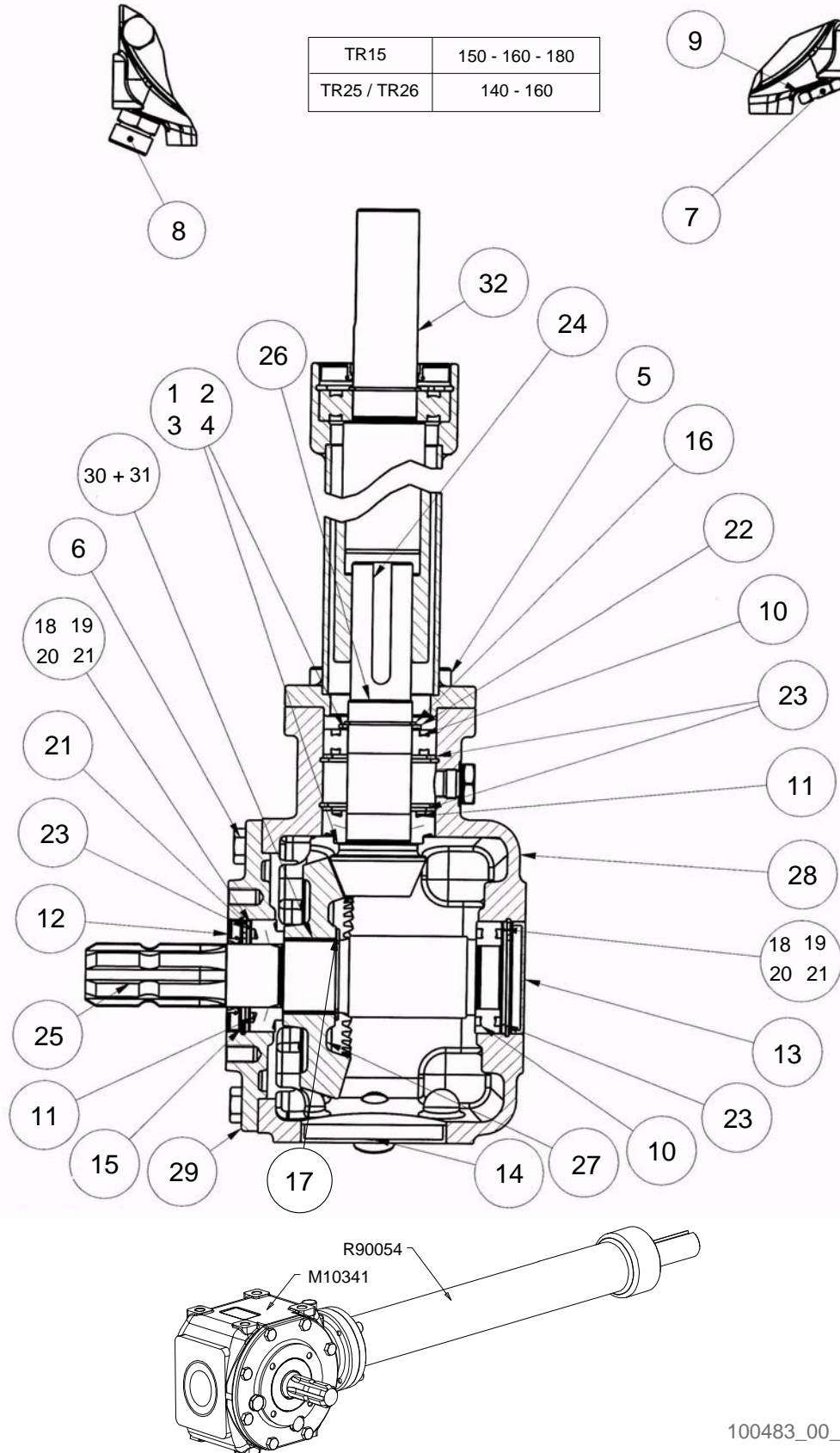
Overgear M06909

Multiplicateur M06909

Übersetzen M06909

Drawing Code: **100483_0_f1**

Accessories:



100483_00_f1



Moltiplicatore M06909

Overgear M06909

Multiplicateur M06909

Übersetzen M06909

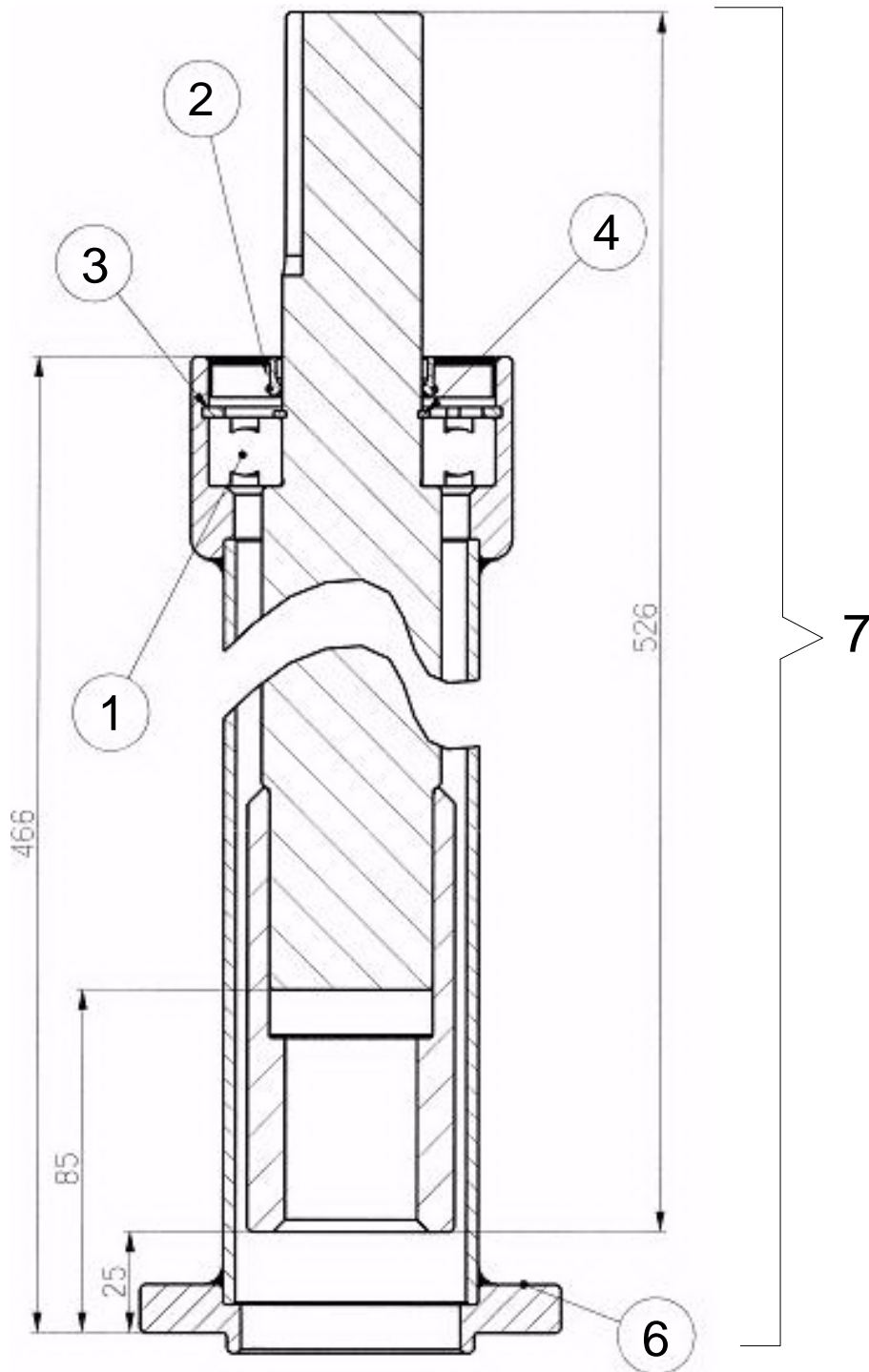
Drawing Code: **100483_0_f1**

Accessories:

N°	Code	Old.	Descrizione /Description
12	H00A00103	C10116	PARAOLIO BASL D.35X62X7
25	M45A00127	R90055	ALBERO 1PTO 1.3/8 Z=6 R.L.230
26	M40A00146	R90047	PIG. CON. Z=12 M=3.65 RAPP.=3.083 D.33
27	M40A00147	R90048	CORONA CON. RUOTA LIBERA DX Z=37 M=3.65
28	C15A01020	R90049	SCATOLA RIDUTTORE R230
29	M35A00085	R90050	COPERCHIO R230
30	M75A00143	R90020	KIT NOTTOLINO L=28 + MOLLA RUOTA LIBERA TL30-TL32
31	MF5A00085	R90021	MOLLA PER RUOTA LIBERA TL30-TL32
32	M65A00160	R90054	PROLUNGA COMPLETA L=466/615 CH R231
#	M65A00109	M10341	MOLTIPLICATORE TESTA R230 1 P.D.F
#	M65A00160	R90054	PROLUNGA COMPLETA L=466/615 CH R231

GB	FR	D	E
SEALING RING	JOINT SPI	OELABDICHTUNG	PARAOLIO
SHAFT	ARBRE	WELLE	EJE
PINION	PIGNON	RITZEL	PIÑON
CROWN	COURONNE	KRONE	CORONA
BOX	BOITE	SCHACTEL	RECUADRO
LID	COUVERCLE	DECKEL	TAPA
KIT	KIT	KIT	KIT
SPRING	RESSORT	FEDER	MUELLE
EXTENSION	EXTENSION	VERLAENGERUNG	EXTENSIÓN
MULTIPLIER	MULTIPLICATEUR	UEBERSETZUNGSGETRIEBE	MULTIPLICADOR
EXTENSION	EXTENSION	VERLAENGERUNG	EXTENSIÓN

TR15	150 - 160 - 180
TR25 / TR26	140 - 160



100483_00_f2



Prolunga moltiplicatore M06909

Overgear M06909

Multiplicateur M06909

Übersetzen M06909

Drawing Code: **100483_0_f2**

Accessories:

N°	Code	Old.	Descrizione / Description
1	M20A00024	C21116	CUSCINETTO 6207 35x72x17
2	H00A00044	C10118	PARAOLIO BASL D.35X72X10
3	MA0A00008	C04033	SEEGER FORO D.72 UNI 7437
4	MA0A00036	C04138	SEEGER ALBERO D.35 UNI 7435
6	C20A03432		CARTER PROLUNGA L=466/615 R231 M150406
7	M65A00160	R90054	PROLUNGA COMPLETA L=466/615 CH R231

GB	FR	D	E
BEARING	ROULEMENT	KUGELLAGER	COJINETE
SEALING RING	JOINT SPI	OELABDICHTUNG	PARAOLIO
SEEGER	SEEGER	SEEGER	SEEGER
SEEGER	SEEGER	SEEGER	SEEGER
HOUSING	CARTER	GEHAUSE	CARTER
EXTENSION	EXTENSION	VERLAENGERUNG	EXTENSIÓN

Moltiplicatore M65A00223

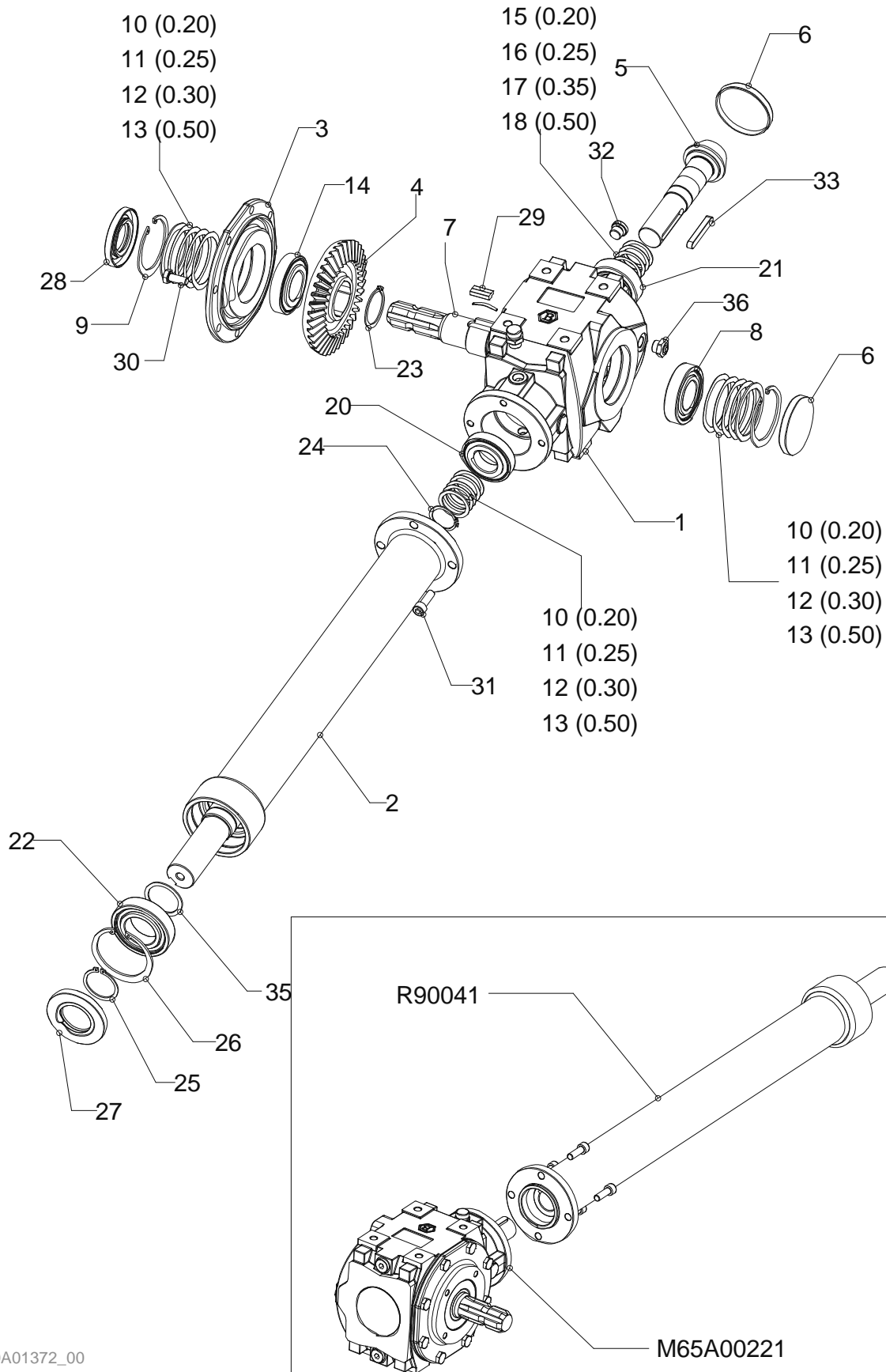
Overgear M65A00223

Multiplicateur M65A00223

Übersetzen M65A00223

Drawing Code: **K00A01372_0**

Accessories:



K00A01372_00



Moltiplicatore M65A00223

Overgear M65A00223

Multiplicateur M65A00223

Übersetzen M65A00223

Drawing Code: **K00A01372_0**

Accessories:

N°	Code	Old.	Descrizione / Description	GB	FR	D	E
1	C15A01311		SCATOLA RIDUTTORE G240	BOX	BOITE	SCHACTEL	RECUADRO
3	M35A00107		FLANGIA P.T.O RIDUTTORE G240	FLANGE	FLANC	FLANSCH	FLANGE
4	M40A00140	R90017	CORONA CONICA PER RUOTA LIBERA Z=37 M=4,23	CROWN	COURONNE	KRONE	CORONA
5	M40A00139	R90016	PIGNONE CONICO Z=12 M=4,23 TL30-TL32	PINION	PIGNON	RITZEL	PIÑON
6	H00A00087	C10321	CAPPELOTTO D.80X10	PLASTIC GUARD	BACHE	KUNSTSTOFF-DECKEL	SOMBRERETE
7	M45A00119	R90015	"ALBERO P.T.O 1"3/8 PER RUOTA LIBERA TL30"	SHAFT	ARBRE	WELLE	EJE
8	M20A00028	C21120	CUSCINETTO 6208 40x80x18	BEARING	ROULEMENT	KUGELLAGER	COJINETE
9	MA0A00010	C04035	SEEGER FORO D.80 UNI 7437	SEEGER	SEEGER	SEEGER	SEEGER
20	M20A00070	C21507	CUSCINETTO 32207 35X72X24,25	BEARING	ROULEMENT	KUGELLAGER	COJINETE
21	M20A00059	C21407	CUSCINETTO 30207 35X72X18,25 J2	BEARING	ROULEMENT	KUGELLAGER	COJINETE
22	M20A00030	C21123	CUSCINETTO 6209 45X85X19	BEARING	ROULEMENT	KUGELLAGER	COJINETE
23	MA0A00043	C04143	SEEGER ALBERO d.48 UNI 7435	SEEGER	SEEGER	SEEGER	SEEGER
14	M20A00060	C21408	CUSCINETTO 30208 40X80X19,75	BEARING	ROULEMENT	KUGELLAGER	COJINETE
24	MA0A00036	C04138	SEEGER ALBERO D.35 UNI 7435	SEEGER	SEEGER	SEEGER	SEEGER
25	MA0A00049	C04162	SEEGER ALBERO D.45 UNI 7435	SEEGER	SEEGER	SEEGER	SEEGER
26	MA0A00011	C04036	SEEGER FORO D.85 UNI 7437	SEEGER	SEEGER	SEEGER	SEEGER
27	H00A00102	C10132	PARAOLIO BASL D.45X85X10	SEALING RING	JOINT SPI	OELABDICHTUNG	PARAOLIO
28	H00A00101	C10123	PARAOLIO BASL D.40X80X10	SEALING RING	JOINT SPI	OELABDICHTUNG	PARAOLIO
29	M75A00143	R90020	KIT NOTTOLINO L=28 + MOLLA RUOTA LIBERA TL30-TL32	KIT	KIT	KIT	KIT
30	M80A00118	C00131	VITE TE 88 PG FT M10X25 ZINC UNI 5739	SCREW	VIS	SCHRAUBE	TORNILLO
31	M80A00244	C00431	VITE TCEI PG M10X30 ZINC UNI 5931	SCREW	VIS	SCHRAUBE	TORNILLO
32	H45A00016	C41225	TAPPO M16X1,5 (32.A)	PLUG	BOUCHON	STOEPSSEL	ENCHUFE
33	MC0A00004	C04907	LINGUETTA 10X8X60 UNI 6604	TONGUE	CLAVETTE	ZUNGE	LENGUA
34	H65A00002	C41230	TAPPO SFIATO M16X1,5 (30.A) LABIRINTO	PLUG	BOUCHON	STOEPSSEL	ENCHUFE
15	MA5A00053	C04255	SPESSORE REG. 35X45X0,20	THICKNESS	CALES	DICKE	ESPEJOR
16	MA5A00054	C04256	SPESSORE REG. 35X45X0,25	THICKNESS	CALES	DICKE	ESPEJOR
17	MA5A00055	C04257	SPESSORE REG. 35X45X0,35	THICKNESS	CALES	DICKE	ESPEJOR
18	MA5A00056	C04258	SPESSORE REG. 35X45X0,50	THICKNESS	CALES	DICKE	ESPEJOR
10	MA5A00025	C04225	SPESSORE REG. 65,3X79,7X0,2	THICKNESS	CALES	DICKE	ESPEJOR
11	MA5A00026	C04226	SPESSORE REG. 65,3X79,7X0,25	THICKNESS	CALES	DICKE	ESPEJOR
12	MA5A00027	C04227	SPESSORE REG. 65,3X79,7X0,3	THICKNESS	CALES	DICKE	ESPEJOR
13	MA5A00028	C04228	SPESSORE REG. 65,3X79,7X0,5	THICKNESS	CALES	DICKE	ESPEJOR
M65A00221	M65A00221		MULTIPLIC. R240-1/3-RL-D33 (G240)	MULTIPLIER	MULTIPLICATEUR	UEBERSETZUNGSGETRIEBE	MULTIPLICADOR
M65A00224	M65A00224		PROLUNGA COMPLETA 790/950 R241	EXTENSION	EXTENSION	VERLAENGERUNG	EXTENSIÓN
-	M65A00157	R90041	PROLUNGA COMPL. 780 CH M12 R241	EXTENSION	EXTENSION	VERLAENGERUNG	EXTENSIÓN

Moltiplicatore M65A00225

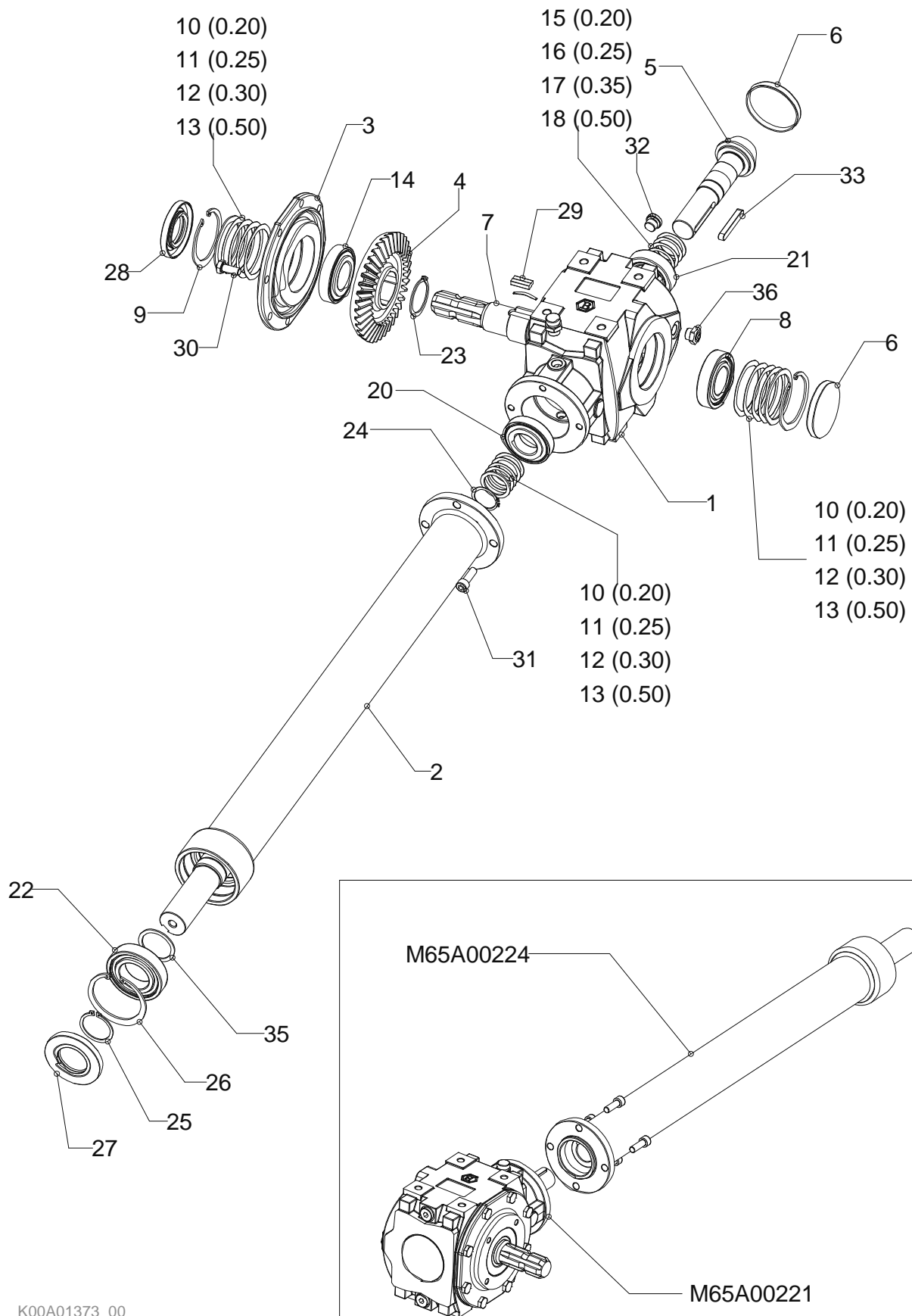
Overgear M65A00225

Multiplicateur M65A00225

Übersetzen M65A00225

Drawing Code: **K00A01373_0**

Accessories:



K00A01373_00



Moltiplicatore M65A00225

Overgear M65A00225

Multiplicateur M65A00225

Übersetzen M65A00225

Drawing Code: **K00A01373_0**

Accessories:

N°	Code	Old.	Descrizione / Description	GB	FR	D	E
1	C15A01311		SCATOLA RIDUTTORE G240	BOX	BOITE	SCHACTEL	RECUADRO
3	M35A00107		FLANGIA P.T.O RIDUTTORE G240	FLANGE	FLANC	FLANSCH	FLANGE
4	M40A00140	R90017	CORONA CONICA PER RUOTA LIBERA Z=37 M=4,23	CROWN	COURONNE	KRONE	CORONA
5	M40A00139	R90016	PIGNONE CONICO Z=12 M=4,23 TL30-TL32	PINION	PIGNON	RITZEL	PIÑON
6	H00A00087	C10321	CAPPELOTTO D.80X10	PLASTIC GUARD	BACHE	KUNSTSTOFF-DECKEL	SOMBRERETE
7	M45A00119	R90015	"ALBERO P.T.O 1"3/8 PER RUOTA LIBERA TL30"	SHAFT	ARBRE	WELLE	EJE
8	M20A00028	C21120	CUSCINETTO 6208 40x80x18	BEARING	ROULEMENT	KUGELLAGER	COJINETE
9	MA0A00010	C04035	SEEGER FORO D.80 UNI 7437	SEEGER	SEEGER	SEEGER	SEEGER
20	M20A00070	C21507	CUSCINETTO 32207 35X72X24,25	BEARING	ROULEMENT	KUGELLAGER	COJINETE
21	M20A00059	C21407	CUSCINETTO 30207 35X72X18,25 J2	BEARING	ROULEMENT	KUGELLAGER	COJINETE
22	M20A00030	C21123	CUSCINETTO 6209 45X85X19	BEARING	ROULEMENT	KUGELLAGER	COJINETE
23	MA0A00043	C04143	SEEGER ALBERO d.48 UNI 7435	SEEGER	SEEGER	SEEGER	SEEGER
14	M20A00060	C21408	CUSCINETTO 30208 40X80X19,75	BEARING	ROULEMENT	KUGELLAGER	COJINETE
24	MA0A00036	C04138	SEEGER ALBERO D.35 UNI 7435	SEEGER	SEEGER	SEEGER	SEEGER
25	MA0A00049	C04162	SEEGER ALBERO D.45 UNI 7435	SEEGER	SEEGER	SEEGER	SEEGER
26	MA0A00011	C04036	SEEGER FORO D.85 UNI 7437	SEEGER	SEEGER	SEEGER	SEEGER
27	H00A00102	C10132	PARAOLIO BASL D.45X85X10	SEALING RING	JOINT SPI	OELABDICHTUNG	PARAOLIO
28	H00A00101	C10123	PARAOLIO BASL D.40X80X10	SEALING RING	JOINT SPI	OELABDICHTUNG	PARAOLIO
29	M75A00143	R90020	KIT NOTTOLINO L=28 + MOLLA RUOTA LIBERA TL30-TL32	KIT	KIT	KIT	KIT
30	M80A00118	C00131	VITE TE 88 PG FT M10X25 ZINC UNI 5739	SCREW	VIS	SCHRAUBE	TORNILLO
31	M80A00244	C00431	VITE TCEI PG M10X30 ZINC UNI 5931	SCREW	VIS	SCHRAUBE	TORNILLO
32	H45A00016	C41225	TAPPO M16X1,5 (32.A)	PLUG	BOUCHON	STOEPSSEL	ENCHUFE
33	MC0A00004	C04907	LINGUETTA 10X8X60 UNI 6604	TONGUE	CLAVETTE	ZUNGE	LENGUA
34	H65A00002	C41230	TAPPO SFIATO M16X1,5 (30.A) LABIRINTO	PLUG	BOUCHON	STOEPSSEL	ENCHUFE
15	MA5A00053	C04255	SPESSORE REG. 35X45X0,20	THICKNESS	CALES	DICKE	ESPESOR
16	MA5A00054	C04256	SPESSORE REG. 35X45X0,25	THICKNESS	CALES	DICKE	ESPESOR
17	MA5A00055	C04257	SPESSORE REG. 35X45X0,35	THICKNESS	CALES	DICKE	ESPESOR
18	MA5A00056	C04258	SPESSORE REG. 35X45X0,50	THICKNESS	CALES	DICKE	ESPESOR
10	MA5A00025	C04225	SPESSORE REG. 65,3X79,7X0,2	THICKNESS	CALES	DICKE	ESPESOR
11	MA5A00026	C04226	SPESSORE REG. 65,3X79,7X0,25	THICKNESS	CALES	DICKE	ESPESOR
12	MA5A00027	C04227	SPESSORE REG. 65,3X79,7X0,3	THICKNESS	CALES	DICKE	ESPESOR
13	MA5A00028	C04228	SPESSORE REG. 65,3X79,7X0,5	THICKNESS	CALES	DICKE	ESPESOR
M65A00221	M65A00221		MULTIPLIC. R240-1/3-RL-D33 (G240)	MULTIPLIER	MULTIPLICATEUR	UEBERSETZUNGSGETRIEBE	MULTIPLICADOR
M65A00224	M65A00224		PROLUNGA COMPLETA 790/950 R241	EXTENSION	EXTENSION	VERLAENGERUNG	EXTENSIÓN



Cardano M06950

PTO shaft

Arbre de transmission

Gelenkwelle

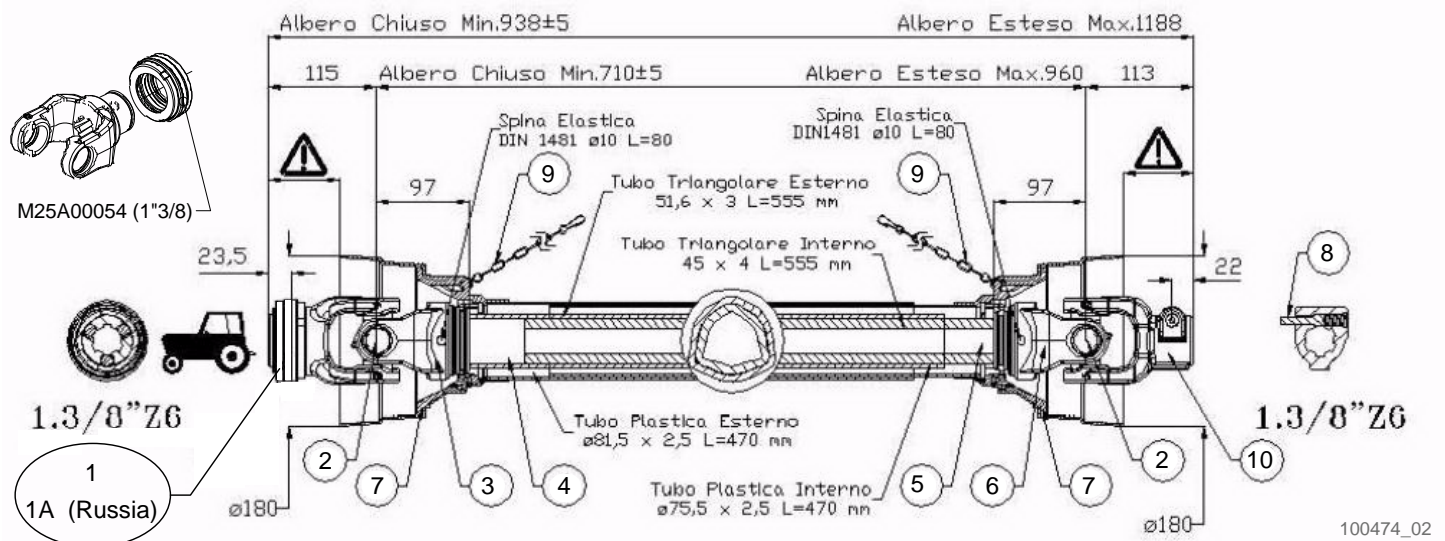
Drawing Code:

100474_2

Accessories:

Codice cardano
Code pto shaft
Code de arbre de transmission
Code gelenkwelle

M06950





Cardano M06950

PTO shaft

Arbre de transmission

Gelenkwelle

Drawing Code:

100474_2

Accessories:

N°	Code	Old.	Descrizione /Description
1	M72A00067	R50128	"FORCELLA RAPIDO COLLAR 1""3/8 Z=6 B05"
1A	M72A00073	R50138	FORCELLA 5 D8X32X38 (RUSSIA)
2	M71A00007	R50129	CROCIERA D.30.2X80 (B05)
3	M72A00068	R50130	FORCELLA EST TUBO TRIANG 51.6X3 B05
4	M73A00043	R50131	TUBO TRIANGOLARE EST. 51.6X3 B05
5	M73A00041	R50121	TUBO TRIANGOLARE INT. 45X4 B05-B06
6	M72A00069	R50132	FORCELLA INT TUBO TRIANG 45X4 B05
7	G10A00089	R50133	PROTEZIONE COMPL. CARDANO B05 L=710
8	MF0A00063	R50012	"PULSANTE COMPLETO 1""3/8"
9	MH0A00022	R50119	CATENELLA PROTEZ.CARDANO L=550
10	M72A00070	R50134	"FORCELLA 5 1"" 3/8 Z6 ATT.PULSANTE"
M25A00054	M25A00054		"COLLARE ATTACCO RAPIDO ACCIAIO 1"" 3/8"
M06950	M70A00065	M06950	"CARDANO B05-071-1""3/8+1""3/8"

GB	FR	D	E
FORK	MACHOIRE	GABEL	HORQUILLA
FORK	MACHOIRE	GABEL	HORQUILLA
CRUISE	CROISIÈRE	CRUISE	CRUISE
FORK	MACHOIRE	GABEL	HORQUILLA
TUBE	TUBE	ROHR	TUBO
TUBE	TUBE	ROHR	TUBO
FORK	MACHOIRE	GABEL	HORQUILLA
PROTECTION	PROTECTION	SCHUTZ	PROTECCIÓN
BUTTON	BOUTON	BUTTON	BOTÓN
CHAIN	CHAÎNE	KETTE	CADENA
FORK	MACHOIRE	GABEL	HORQUILLA
METAL RING	COLLARE	METALLRING	COLLAR
UNIVERSAL JOINT	CARDAN	GELENKWELLE	CARDAN

Kit coppia ruote posterior TR26

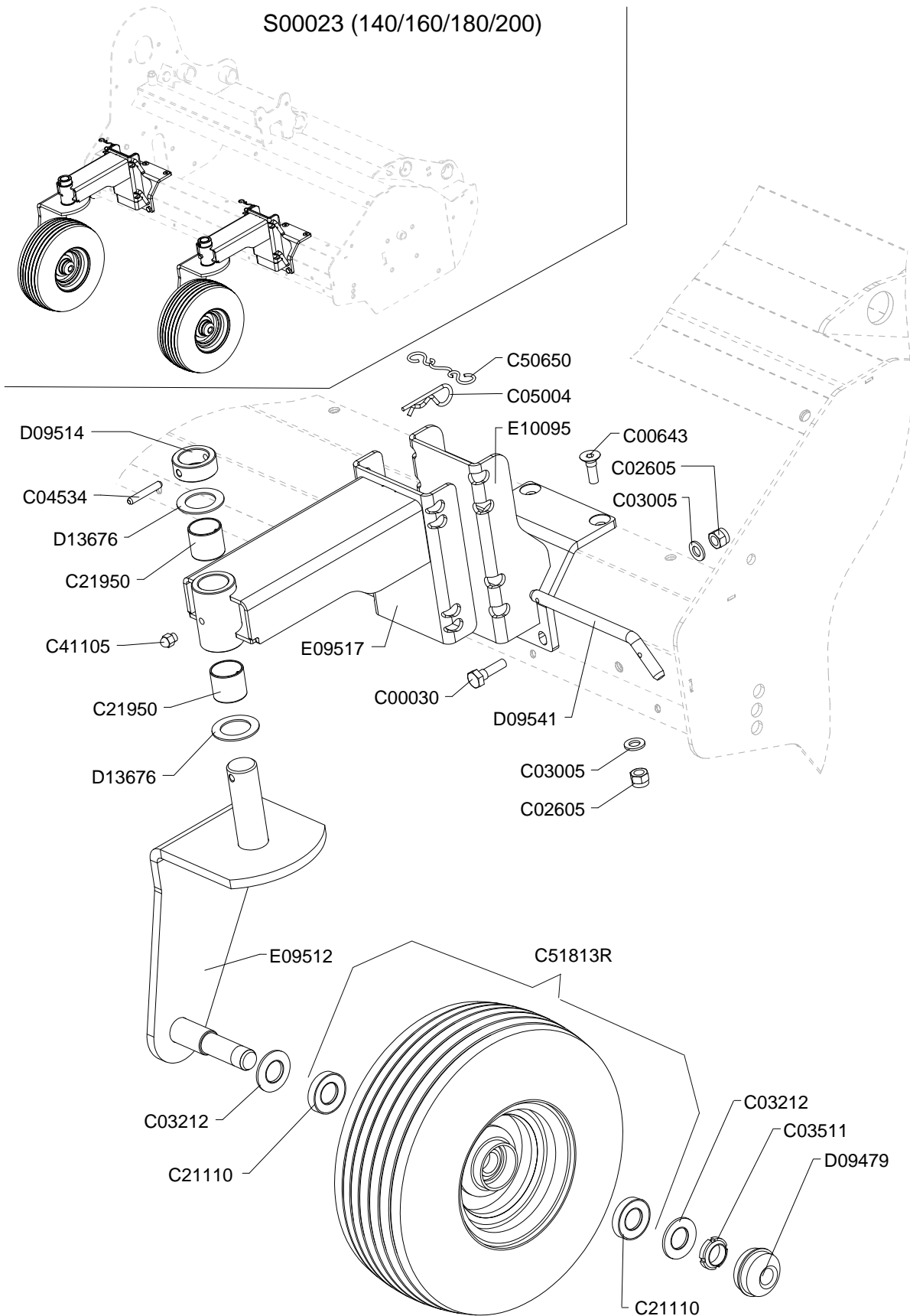
Kit posterior couple of wheels TR26

Kit couple roues posterieures TR26

Kit kupeln hintere Rader TR26

Drawing Code: **100832_1**

Accessories: S75A00027



100832_01



Kit coppia ruote posterior TR26

Kit posterior couple of wheels TR26

Kit couple roues posterieures TR26

Kit kupeln hintere Rader TR26

Drawing Code: **100832_1**

Accessories: S75A00027

N°	Code	Old.	Descrizione /Description
#	M80A00027	C00030	VITE TE 88 PG FP M12X40 ZINC UNI 5737
#	M80A00291	C00643	VITE TSPEI 10.9 PG M12X35 ZINC UNI 5933
#	M85A00078	C02605	DADO AUTOBLOC ALTO 8 M12 H=14 UNI 7473
#	M90A00008	C03005	RONDELLA PIANA D.13 DIN125-A ZINC.
#	M90A00055	C03212	DISCO ELAST. D.25.4X50X3 DIN 2093
#	M95A00002	C03511	GHIERA AUTOBLOC.BASSA GUK M25X1,5
#	MB0A00023	C04534	SPINA ELASTICA D.8X50
#	MB0A00087	C05004	SPINA A MOLLA D.4
#	M20A00020	C21110	CUSCINETTO 6205 2RS 25X52X15
#	M25A00002	C21950	BOCCOLA ALVEOLATA 35-35 KX 22
#	MJ5A00005	C41105	INGRASSATORE M10X1 DIRITTO
#	M79A00002	C50650	GOMMINO CON ANELLI L.240 MM.
#	M00A00009	C51813R	RUOTA COMPL PNEUM 15X6.00-6 10PR (10 TELE) CUSC.D.25-D.:
#	C10A02372	D09479	CAPPELLOTTO MOZZO RUOTA D.52
#	C15A00557	D09514	DISTANZIALE D.48 D.35 L=20 FORO D8
#	M15A00116	D09541	PERNO D.14X225 (UT.150) PIEGATO
#	MA5A00117	D13676	RALLA 35.5X55X2
#	C20A01632	E09512	FORCELLA RUOTA TR-30 (2ª VERS.)
#	C20A01633	E09517	BRACCIO PORTA SNODO RUOTA TR-30
#	C20A01723	E10095	SUPPORTO REGOLAZIONE RUOTA TR25
#	S75A00027	S00023	KIT RUOTE POSTERIORI TR25/26-140/200

GB	FR	D	E
SCREW	VIS	SCHRAUBE	TORNILLO
SCREW	VIS	SCHRAUBE	TORNILLO
NUT	BOULONS	NUT	DADO
WASHER	RONDELLE	UNTERLEGSCHIEBE	ARANDELLA
DISC	DISQUE	SCHIEBE	DISCO
METAL RING	RONDELLE	METALL-RING	RUEDA
SOCKET	GOUPILLE	STECKER	PASADOR
SOCKET	GOUPILLE	STECKER	PASADOR
BEARING	ROULEMENT	KUGELLAGER	COJINETE
BUSH	DOUILLE	BUCHSE	BOCOLA
GREASE NIPPLE	GRAISSOR	FETTBUECHSE	ENGRASADOR
RUBBER	CAOUTCHOUC	BELAG	GOMAS
WHEEL	ROUE	RAD	RUEDA
PLASTIC GUARD	BACHE	KUNSTSTOFF-DECKEL	SOMBRERETE
SPACER	ENTRETOISE	ABSTANDSTUECK	ESPACIADORES
PIN	PIVOT	STIFT	PIN
FIFTH WHEEL	RONDELLE	DREHPLATTE	RAYA
FORK	MACHOIRE	GABEL	HORQUILLA
ARM	BRAS	ARM	BRAZO
SUPPORT	SUPPORT	STUTZE	APOYO
KIT	KIT	KIT	KIT