



**i•Print 2**

Thermal Printer

Technical Guide



# Table of Contents

<b>1. General Information</b>	<b>2</b>
Important safety standards .....	2
Mechanical installation.....	3
Connections .....	4
Loading the paper roll .....	5
Paper specifications.....	6
Maintenance .....	6
EC Declaration of Conformity .....	7
<b>2. Description</b>	<b>8</b>
General Features .....	8
Printer Description .....	9
<b>3. Annex A</b>	<b>10</b>
Technical Specifications .....	10

# General Information

---

Before using **i•Print 2** it is important to read the information provided in this Guide to avoid seriously harming yourself or damaging the printer.

**Note:** for further information, contact your Distributor or send a support request to the address [support@labelgroup.com](mailto:support@labelgroup.com).

## Important safety standards

- Carefully read all the documentation attached to the printer.
- Comply with all the instructions and precautions contained in this Guide.
- Only qualified personnel are authorised to assemble and commission this equipment.
- Before commissioning the printer, analyse the risks which could arise from its use, especially regarding personal safety and that of the plants.
- Disconnect the connection cable when needing to weld the mixing wagon.
- Do not insert objects inside the printer as this could cause short-circuiting or damage components that could jeopardize printer functioning.
- Do not expose the printer into contact with aggressive chemicals or solvents that can affect plastic materials or corrode metal parts.

Disconnect the connection cable in the following situations:

- If the connection cable or connectors are worn or damaged.
- If there is any liquid inside the printer, including condensation.
- If printer case is damaged or broken.
- If the vehicle battery needs to be recharged.



This symbol indicates that, based on local laws and standards, the product must be disposed of separately from household waste. When the product can no longer be used, it must be brought to the collection spot established by local authorities. Check local standards for further information regarding waste of electronic products.

### **Mechanical installation**

The printer must be installed using the fixing system included in the supply. It must be installed on a flat, stable and vibration-free surface. Do not install or place the printer near heat sources or strong magnetic fields (motors, magnets, etc.).

## Connections

The printer is connected to the **i•FeedGood** scale through a cable with two M12 straight, 8-pole, M/F connectors. The female connector must be inserted in the connector of the printer, while the male connector must be inserted in the **COM A** connector of the scale.

**Note:** if the scale is supplied with the “COM B Port” option, you must connect the printer to the **COM B** connector.

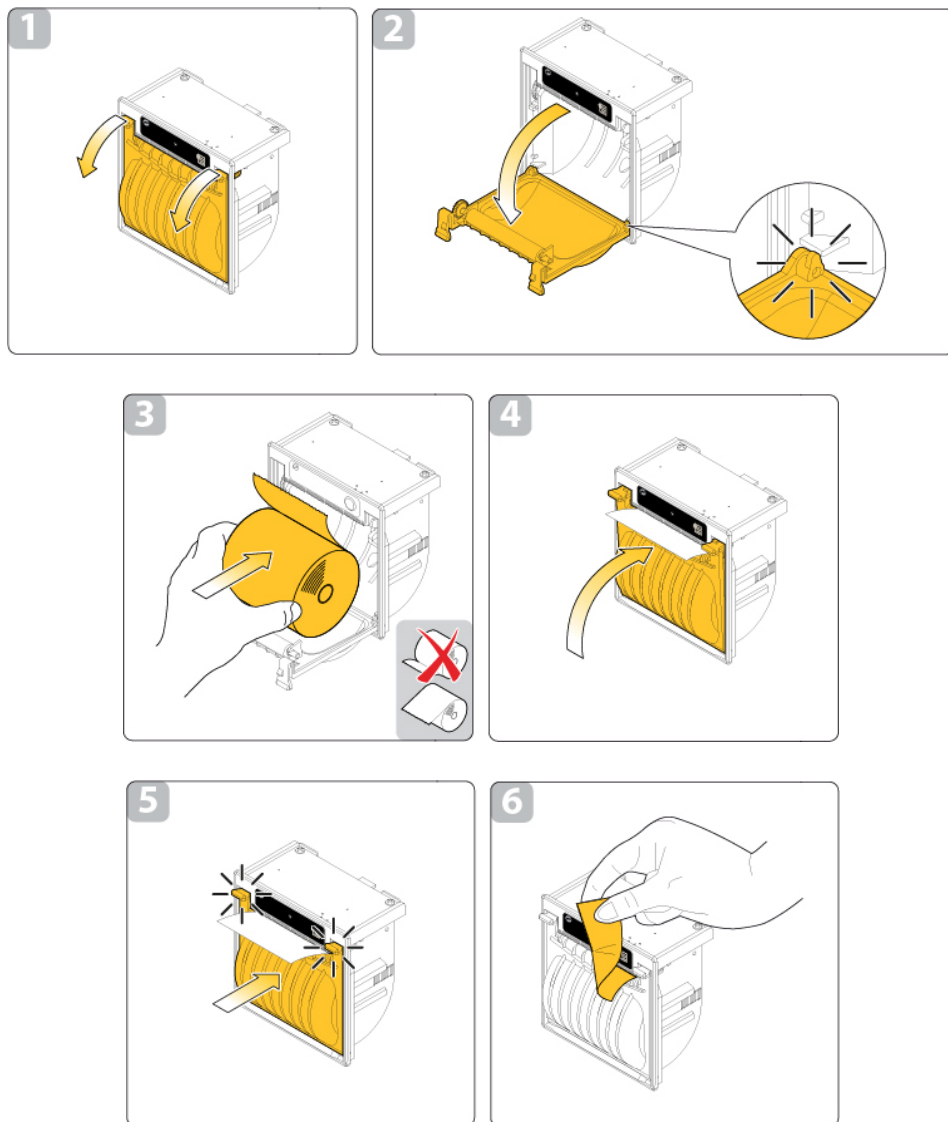
**Note:** before performing the connections, make sure that the scale is off.

Male M12 connector	
Pin	Function
1	+VIN
2	CTS
3	n.c.
4	TxD
5	GND
6	RxD
7	n.c.
8	n.c.

## Loading the paper roll

To change the paper proceed as follows:

1. Open the printer cover using the two opening levers on the plastic cover.
2. Move down the plastic cover to the maximum opening.
3. Place the paper roll making sure that it unrolls in the proper direction.
4. Take out the paper and close the plastic cover.
5. Push the two opening levers up to lock the cover.
6. Tear off exceeding paper using the jagged edge.



## Paper specifications

- |                                |   |
|--------------------------------|---|
| • Type of paper:               | Thermal rolls.                                  |
| • Heat-sensitive side:         | Outside of roll.                                |
| • Paper width:                 | 57mm ± 0,5mm.                                   |
| • Paper weight:                | From 55g/m <sup>2</sup> to 70g/m <sup>2</sup> . |
| • Paper thickness:             | From 63µm to 85µm.                              |
| • External roll diameter:      | Max. Ø 50mm.                                    |
| • External roll core diameter: | 12mm (+1mm).                                    |
| • Paper end:                   | Not attached to roll core.                      |
| • Core type:                   | Cardboard or plastic.                           |

## Maintenance

In order to prevent malfunctioning or failures, it is recommended to perform the following operations periodically:

- Check that the external power supply system to the printer works properly, also checking that the connection points have no oxidization or humidity.
- Periodically clean the printer using a moist, soft and down-free cloth. Never use sprays, abrasives, solvents or sharp objects which can damage the case.
- Before cleaning the mixing wagon with high pressure water jets, disconnect the connection cable, remove the printer from the mixing wagon and protect the connectors of the connection cable from possible water infiltrations.



## EC Declaration of Conformity

The printer complies with the essential requirements of the Directive 2014/30/EU on Electromagnetic Compatibility as it complies with standards EN 61326-1:2013.

If the printer is not installed and used in strict compliance with the instructions provided in this Guide, it could be faulty or cause the surrounding equipment to malfunction. In any case there is no guarantee of these failures not occurring in a specific installation. Should any malfunctioning occur, contact the Customer Service which can suggest measures to be taken to eliminate the problems.

Compliance with Directives is only guaranteed when original accessories and spare parts are used. Any modifications or interventions to the printer not authorised by the manufacturer in writing could cancel its conformity to Directives and make it prohibited for use.

# Description

---

## General Features

The **i•Print 2** printer is a thermal printer with an easier paper loading system. **i•Print 2** is versatile and efficient, able to satisfy all printing requirements. The printer has a 203 dpi (8dots/mm) thermal printing mechanism, which uses a 57 mm width and 50 mm diameter roll of thermal paper.

Placed inside a case, it is ideal for professional applications, even in dusty environments or outdoors. The case has a suitable housing to collect paper during printing.

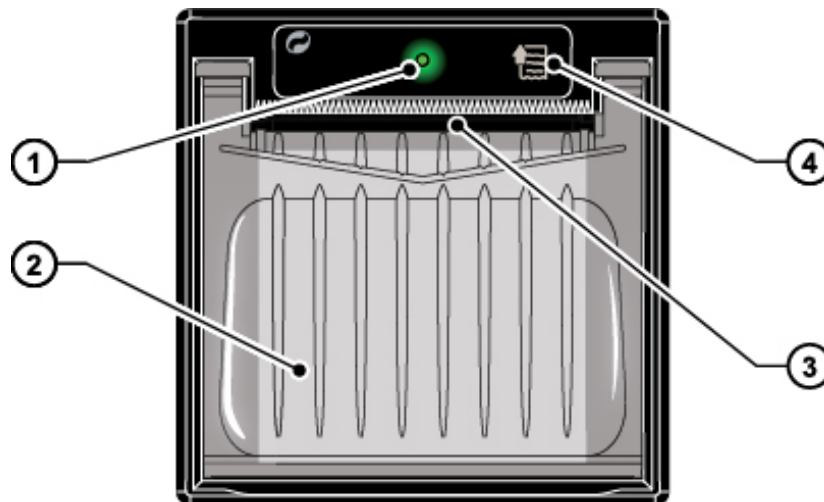


## Printer Description

The printer has a front cover which opens to allow access to the paper roll and print head.

The front panel has a Feed key and Status led.

1. Status led.  
Displays printer hardware status.
  - OFF  
Printer OFF.
  - Green  
Printer ON (no error).
  - Slow flashing green  
Paper end.
  - Fast flashing green.  
Heading over temperature or power supply voltage incorrect.
2. Paper roll holder compartment..
3. Paper outfeed slot.  
The slot has a serrated edge to facilitate the tearing of excess paper.
4. Feed key.  
It is useful for paper advancement.



## Technical Specifications

<b>Printing Methods</b>	Fixed head thermal printing
<b>Resolution</b>	203dpi (8dots/mm)
<b>Printing Speed</b>	40mm/sec
<b>Columns</b>	40
<b>Type of Paper</b>	Thermal
<b>Paper width</b>	57mm ± 0.5mm
<b>Roll dimension</b>	Max. Ø 50mm
<b>Interface</b>	RS232C
<b>Sensors</b>	Head temperature, paper presence
<b>Power Supply Voltage</b>	10 ÷ 36Vdc
<b>Power Consumption</b>	Max. 36W
<b>Operating Temperature</b>	-20°C ÷ +70°C
<b>Case</b>	ABS
<b>Degree of Protection (EN60529)</b>	IP65
<b>Weight</b>	1.6kg
<b>Dimensions (L x W x H)</b>	280x180x120mm





■ **Label S.r.l.**

© 1986 - 2016 Label S.r.l.

All Rights Reserved.

According to copyright laws, this manual cannot be copied, in whole or in part, without the written consent of **Label**.

**Label** has undertaken so that the information contained in this manual be as precise as possible. **Label** will not be held liable for any printing errors.

**Label** will not be held liable for direct or indirect damage to persons, animals or property resulting from misuse or improper use of its products and for damage resulting from failure to use or suspension from using the products; nor will we be held liable for damage which our products can cause in relation to their use or damage resulting from failure to use the products during the repair phase, even if covered by Warranty.

For further information on Terms and Conditions of the Warranty, contact Customer Service.

**Label** reserves the right to make changes and improvements to the products and documentation without prior notice and without the obligation of having to update previous products and documentation.

Any updates and additions made to the documentation in subsequent editions, even if referring to the same product, does not make the previous documentation inadequate.



**Label S.r.l.**

Via Don Mazzucotelli, 6/A  
24020 Gorle (BG) ITALY  
Phone +39 035 30.28.12  
Fax +39 035 30.28.15  
[support@labelgroup.com](mailto:support@labelgroup.com)  
[www.labelgroup.com](http://www.labelgroup.com)