

| RIF. | CODICE | QT | SIGLA | DENOMINAZIONE | FR | D | GB | RIF. | CODICE | QT | SIGLA | DENOMINAZIONE | FR | D | GB |
|------|--------------|----|-----------------|----------------------|------------|----------|------------|------|--------------|----|------------------|--------------------|------------|-----------|------------|
| 1 | 103040068.00 | 15 | M12 | Dado autobloccante | Ecrou | Mutter | Nut | 30 | 450570010,00 | 2 | ISL IS | Siltino inferiore | Protection | Schlitten | Skid |
| 2 | 103100010.00 | 15 | Diam. 12 piana | Rondella | Rondelle | Scheibe | Washer | 31 | 103040078,00 | 2 | M20X1,5 | Dado | Ecrou | Mutter | Nut |
| 3 | 103140263.00 | 3 | M12X100 z. | Vite | Vis | Schraube | Bolt | 32 | 103150101,00 | 1 | M14X45 z. | Vite | Vis | Schraube | Bolt |
| 4 | 450600008.00 | 1 | IS | Staffa | Etrier | Buegel | Bracket | 33 | 350402047,00 | 1 | IS ZM | Lamiera | Plaque | Platte | Plate |
| 5 | 450650149.00 | 1 | IS 105 | Telaio | Chassis | Rahmen | Frame | 34 | 103150093,00 | 4 | M12X110 z. | Vite | Vis | Schraube | Bolt |
| 5 | 450650137.00 | 1 | IS 130 | Telaio | Chassis | Rahmen | Frame | 35 | 350570274,00 | 2 | ISL IS | Piatta attacco | Plat | Platte | Plate |
| 5 | 450650142.00 | 1 | IS 140 | Telaio | Chassis | Rahmen | Frame | 36 | 103100018,00 | 2 | ISL 085>IS 140 | Protezione | Rondelle | Scheibe | Washer |
| 5 | 450650138.00 | 1 | IS 155 | Telaio | Chassis | Rahmen | Frame | 37 | 450450013,00 | 2 | ISL IS 155 | Protezione | Protection | Schutz | Protection |
| 5 | 450650139.02 | 1 | IS 172 | Telaio | Chassis | Rahmen | Frame | 37 | 450450014,00 | 2 | IS 180-205 | Protezione | Protection | Schutz | Protection |
| 5 | 450650139.00 | 1 | IS 180 | Telaio | Chassis | Rahmen | Frame | 37 | 450450017,00 | 2 | IS 230-250 | Protezione | Protection | Schutz | Protection |
| 5 | 450650140.00 | 1 | IS 205 | Telaio | Chassis | Rahmen | Frame | 37 | 450450018,00 | 2 | IS | Piastra | Plaque | Platte | Plate |
| 5 | 450650141.00 | 1 | IS 230 | Telaio | Chassis | Rahmen | Frame | 38 | 350574015,03 | 1 | IS | Piastra | Plaque | Platte | Plate |
| 5 | 450650152.00 | 1 | IS 250 | Telaio | Chassis | Rahmen | Frame | 39 | 350570083,00 | 1 | ISL IS | Piastra | Plaque | Platte | Plate |
| 6 | 350150120.00 | 1 | ISL IS 105 | Coperchio | Couvercle | Deckel | Cover | 40 | 450450023,00 | 1 | ISL IS | Protezione | Protection | Schutz | Protection |
| 6 | 350150050.01 | 1 | ISL IS 130 | Coperchio | Couvercle | Deckel | Cover | 41 | 450610158,00 | 2 | ISL IS | Supporto griglia | Support | Halter | Support |
| 6 | 350150121.00 | 1 | ISL IS 140 | Coperchio | Couvercle | Deckel | Cover | 42 | 103100006,00 | 4 | Diam. 8 piana | Rondella | Rondelle | Scheibe | Washer |
| 6 | 350150051.01 | 1 | ISL IS 155 | Coperchio | Couvercle | Deckel | Cover | 43 | 101150001,00 | 2 | cm. 10 | Cerniera | Charniere | Hinge | |
| 6 | 350150065.10 | 1 | ISL IS 172 | Coperchio | Couvercle | Deckel | Cover | 44 | 103140095,00 | 8 | M14X35X1,5 | Vite | Schraube | Washer | |
| 6 | 350150065.01 | 1 | IS 180 | Coperchio | Couvercle | Deckel | Cover | 45 | 103040030,00 | 8 | M14X1,5 | Dado | Ecrou | Nut | |
| 6 | 350150080.01 | 1 | IS 205 | Coperchio | Couvercle | Deckel | Cover | 46 | 103100028,00 | 8 | Diam. 14 grower | Rondella | Rondelle | Scheibe | Washer |
| 6 | 350150087.01 | 1 | IS 230 | Coperchio | Couvercle | Deckel | Cover | 47 | 103100012,00 | 8 | Diam. 14 piana | Rondella | Rondelle | Scheibe | Washer |
| 6 | 350150125.01 | 1 | IS 250 | Coperchio | Couvercle | Deckel | Cover | 48 | 103150044,00 | 8 | M10X30 z. | Vite | Schraube | Bolt | |
| 7 | 350404047.00 | 1 | IS ZM | Lamiera | Plaque | Platte | Plate | 49 | 103100008,00 | 8 | Diam. 10 piana | Rondella | Rondelle | Scheibe | Washer |
| 8 | 103040024.00 | 13 | M12X1,25 | Dado | Ecrou | Mutter | Nut | 51 | 350572052,04 | 1 | IS | Piastra | Plaque | Platte | Plate |
| 9 | 103100026.00 | 10 | Diam. 12 grower | Rondella | Rondelle | Scheibe | Washer | 51 | 350572052,04 | 1 | IS | Piastra | Plaque | Platte | Plate |
| 10 | 103100014.00 | 4 | Diam. 16 piana | Rondella | Rondelle | Scheibe | Washer | 52 | 103040067,00 | 8< | M10X1,25 | Dado autobloccante | Ecrou | Mutter | Bolt |
| 11 | 103150011.00 | 4 | M8X25 z. | Vite | Vis | Schraube | Bolt | 53 | 103150085,00 | 1 | M12X70 t.filetto | Vite | Schraube | Bolt | |
| 12 | 350620090.00 | 1 | ISL 105 | Protezione | Protection | Schutz | Protection | 54 | 350470070,00 | 1 | ISL IS | Molla x griglia | Ressort | Feder | Spring |
| 12 | 350620091.00 | 1 | ISL IS 130 | Protezione | Protection | Schutz | Protection | 55 | 350830014,00 | 1< | ISL IS | Trafilo | Etrire | Messer | Knife |
| 12 | 350620092.00 | 1 | ISL IS 140 | Protezione | Protection | Schutz | Protection | 56 | 550220018,00 | 2 | ISL IS | Registro | Poignee | Regler | Register |
| 12 | 350620093.00 | 1 | ISL IS 155 | Protezione | Protection | Schutz | Protection | 57 | 103040064,00 | 4 | M8 metalblock | Dado | Ecrou | Mutter | Nut |
| 12 | 350620094.10 | 1 | ISL IS 172 | Protezione | Protection | Schutz | Protection | 58 | 450280006,01 | 1 | ISL IS 105 | Griglia | Grille | Vibrarost | Grille |
| 12 | 350620094.00 | 1 | IS 180 | Protezione | Protection | Schutz | Protection | 58 | 450280001,01 | 1 | ISL IS 130 | Griglia | Grille | Vibrarost | Grille |
| 12 | 350620095.00 | 1 | IS 205 | Protezione | Protection | Schutz | Protection | 58 | 450280009,01 | 1 | ISL IS 140 | Griglia | Grille | Vibrarost | Grille |
| 12 | 350620096.00 | 1 | IS 230 | Protezione | Protection | Schutz | Protection | 58 | 450280002,01 | 1 | ISL IS 155 | Griglia | Grille | Vibrarost | Grille |
| 12 | 350620097.00 | 1 | IS 250 | Protezione | Protection | Schutz | Protection | 58 | 450280014,01 | 1 | ISL IS 172 | Griglia | Grille | Vibrarost | Grille |
| 13 | 103150098.00 | 5 | M14X35 z. | Vite | Vis | Schraube | Bolt | 58 | 450280003,01 | 1 | IS 180 | Griglia | Grille | Vibrarost | Grille |
| 14 | 103040070.00 | 6 | M14 | Dado autobloccante | Ecrou | Mutter | Nut | 58 | 450280004,01 | 1 | IS 205 | Griglia | Grille | Vibrarost | Grille |
| 15 | 103150081.00 | 1 | M12X60 z. | Vite | Vis | Schraube | Bolt | 58 | 450280005,01 | 1 | IS 230 | Griglia | Grille | Vibrarost | Grille |
| 16 | 420610106.00 | 1 | ISL IS | Supporto | Support | Halter | Support | 58 | 450280007,01 | 1 | IS 250 | Griglia | Grille | Vibrarost | Grille |
| 17 | 420610104.00 | 1 | ISL IS | Gancio | Crochet | Haken | Hook | 58 | | | | | | | |
| 18 | 350470029.00 | 1 | ISL IS | Molla | Ressort | Feder | Spring | 58 | | | | | | | |
| 19 | 350560035.00 | 2 | ISL IS | Perno | Pivot | Zapfen | Pin | 58 | | | | | | | |
| 20 | 420410003.00 | 2 | Diam. 28 | Perno | Pivot | Zapfen | Pin | 58 | | | | | | | |
| 21 | 350580283.00 | 1 | ISL IS | Piatta tirante molla | Plat | Platte | Plate | 58 | | | | | | | |
| 22 | 103140077.00 | 10 | M12X40X1,25 | Vite | Vis | Schraube | Bolt | 58 | | | | | | | |
| 23 | 103150072.00 | 8 | M12X35 z. | Vite | Vis | Schraube | Bolt | 58 | | | | | | | |
| 24 | 103040022.00 | 1 | M12 | Dado | Ecrou | Mutter | Nut | 58 | | | | | | | |
| 25 | 450040023.03 | 2 | ISL IS | Attacco | Support | Halter | Support | 58 | | | | | | | |
| 26 | 103040072.00 | 4 | M16 | Dado | Ecrou | Mutter | Nut | 58 | | | | | | | |
| 27 | 350770012.02 | 2 | ISL IS | Staffa | Bride | Buegel | Bracket | 58 | | | | | | | |
| 28 | 103140141.00 | 4 | M16X60 z. | Vite | Vis | Schraube | Bolt | 58 | | | | | | | |
| 29 | 350580302.00 | 3< | ISL IS | Piatta fermo griglia | Plat | Platte | Plate | 58 | | | | | | | |



IS

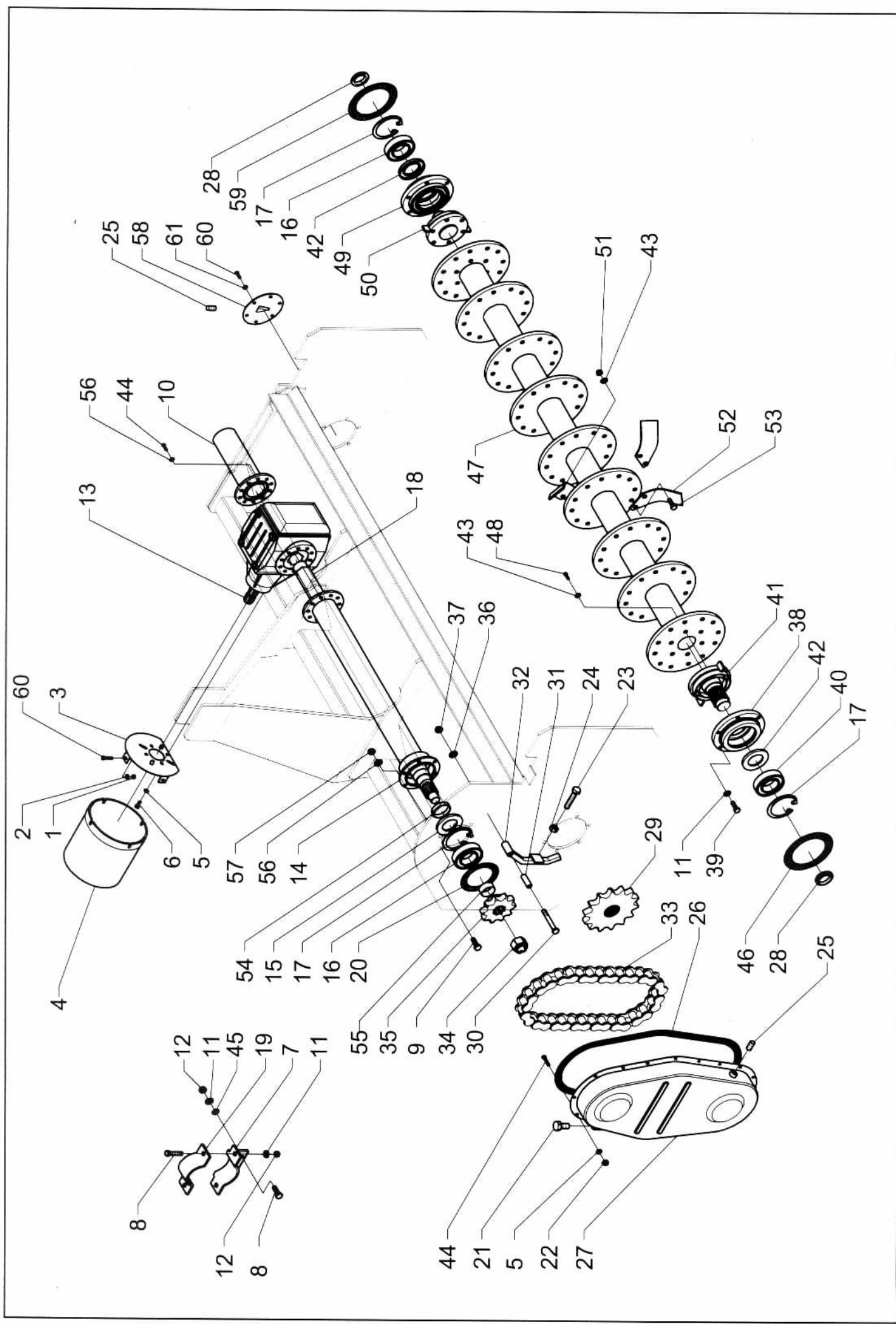
TELAIO

CHASSIS

RAHMEN

FRAME

930



TRAMMISSIONE

TRAMMISSIONE

IS

931

| RIF. | CODICE | QT | SIGLA | DENOMINAZIONE | F | D | GB | RIF. | CODICE | QT | SIGLA | DENOMINAZIONE | F | D | GB |
|------|--------------|----|--------------------|------------------------|--------------|---------------|---------------|------|--------------|-------|------------------|----------------------|-------------|---------------|-------------|
| 1 | 103040008,00 | 3 | M8 zinc.alto | Dado | Eccrou | Mutter | Nut | 28 | 103050012,00 | 2 | M50x1,5 | Ghiera autobloccante | -Collier | Mutter | Zockbush |
| 2 | 103000006,00 | 3 | diam.8 zinc.piana | Rondella | Rondelle | Scheibe | Washer | 29 | 350600018,01 | 1 | Z13 ASA 120 | Pignone d.60 | Pignon | Ritzel | Sprocket |
| 3 | 450040033,00 | 1 | ISL IS | Attacco prot.cardano | Protection | Halter | Support | 30 | 103150107,00 | 1 | M14x90 | Vite | Vis | Schraube | Bolt |
| 4 | 350820044,00 | 1 | ISL IS | protezione cardano | Rondelle | Schutz | Washer | 31 | 350090004,00 | 1 | ISL IS | Boccola tendicaten | Douille | Busche | Bushing |
| 5 | 103100008,00 | 21 | diam.10 zinc.piana | Rondella | Vis | Scheibe | Bolt | 32 | 450660007,00 | 1 | ISL IS | Tendicatena | Tend.chaine | Keilspanner | |
| 6 | 103150034,00 | 3 | M10x20 zinc. | Vite | Support | Schraube | Support | 33 | 112020084,01 | 1 | ASA120 HE 37p. | Catena | Kette | Chainskid | |
| 7 | 450610130,00 | 2 | ISL IS | Supporto riduttore | Vis | Halter | Support | 34 | 103040057,00 | 1 | M33x2 | Dado ad intagli | Eccrou | Mutter | Nut |
| 8 | 103140077,00 | 8 | M12x40x1,25 | Vite | Vis | Schraube | Bolt | 35 | 350800016,00 | 1 | Z10 asa 120 | Pignone | Pignon | Ritzel | Sprocket |
| 9 | 103140059,00 | 6 | M10x35x1,25 | Vite | Vis | Schraube | Bolt | 36 | 103100012,00 | 1 | diam.14 piana | Rondella | Rondelle | Scheibe | Washer |
| 10 | 450440031,00 | 1 | ISL IS | Prolunga rid. dx | Support | Rohr | Support | 37 | 103040070,00 | 1 | M14 autob.basso | Dado | Eccrou | Mutter | Nut |
| 11 | 103100026,00 | 20 | diam.12 grower | Rondella | Rondelle | Scheibe | Washer | 38 | 350250021,01 | 1 | ISL IS | Flangia supp.sx TN | Flasque | Flansch | Housing |
| 12 | 103040024,00 | 8 | M12x1,25 8G | Dado | Eccrou | Mutter | Bolt | 39 | 103140071,00 | 12 | M12 X30x1,25 | Vite | Eccrou | Schraube | Bolt |
| 13 | 112050051,00 | 1 | es.50 IS | Riduttore | Reducteur | Getriebe | Gearbox | 40 | 104030051,00 | 1 | OR.22212 | Cuscinetto a rulli | Roulement | Lager | Bearing |
| 14 | 450440041,01 | 1 | ISL IS mt.0,85 | Prolunga rid. sx | Tuyau | Rohr | Support | 41 | 450370024,01 | 1 | ISL IS | Mozzo sx d. 60 | Moyeu | Nabe | Rotor shaft |
| 14 | 450440041,01 | 1 | ISL IS mt.1,05 | Prolunga rid. sx | Tuyau | Rohr | Support | 42 | 109040020,00 | 2 | 90/70-10 | Paraolio | Para-huille | Oelabdichtung | Oilseal |
| 14 | 450440032,00 | 1 | ISL IS mt.1,30 | Prolunga rid. sx | Tuyau | Rohr | Support | 43 | 103100028,00 | 12+1> | diam.14 grower | Rondella | Rondelle | Scheibe | Washer |
| 14 | 450440033,00 | 1 | ISL IS mt.1,40 | Prolunga rid. sx | Tuyau | Rohr | Support | 44 | 103140055,00 | 33 | M10x30X1,25 | Vite | Vis | Schraube | Bolt |
| 14 | 450440034,00 | 1 | ISL IS mt.1,55 | Prolunga rid. sx | Tuyau | Rohr | Support | 45 | 103100010,00 | 4 | diam.12 piana | Rondella | Rondelle | Scheibe | Washer |
| 14 | 450440035,00 | 1 | ISL IS mt.1,72 | Prolunga rid. sx | Tuyau | Rohr | Support | 46 | 350330012,00 | 1 | ISL IS | Guarnizione flangia | Joint | Dichtung | Gasket |
| 14 | 450440036,00 | 1 | IS mt.1,80 | Prolunga rid. sx | Tuyau | Rohr | Support | 47 | 450500113,00 | 1 | ISL IS mt.0,85 | Rotore a "U" | Rotor | Rotor | Rotor |
| 14 | 450440037,00 | 1 | IS mt.2,05 | Prolunga rid. sx | Tuyau | Rohr | Support | 47 | 450500109,00 | 1 | ISL IS mt.1,05 | Rotore a "U" | Rotor | Rotor | Rotor |
| 14 | 450440038,00 | 1 | IS mt.2,30 | Prolunga rid. sx | Tuyau | Rohr | Support | 47 | 450500033,00 | 1 | ISL IS mt.1,30 | Rotore a "U" | Rotor | Rotor | Rotor |
| 14 | 450440039,00 | 1 | IS mt.2,50 | Prolunga rid. sx | Tuyau | Rohr | Support | 47 | 450500111,00 | 1 | ISL IS mt.1,40 | Rotore a "U" | Rotor | Rotor | Rotor |
| 15 | 109040023,00 | 1 | 100/60-13 | Paraolio | Para-huille | Oelabdichtung | Oilseal | 47 | 450500034,00 | 1 | ISL IS mt.1,55 | Rotore a "U" | Rotor | Rotor | Rotor |
| 16 | 104010012,00 | 2 | 6310 Z | Cuscinetto | Roulement | Lager | Bearing | 47 | 450500114,00 | 1 | ISL IS mt.1,72 | Rotore a "U" | Rotor | Rotor | Rotor |
| 17 | 103010008,00 | 3 | 1110 | Anello seeger | Bague seeger | Seegering | Seegering | 47 | 450500035,00 | 1 | IS mt.1,80 | Rotore a "U" | Rotor | Rotor | Rotor |
| 18 | 350080080,04 | 1 | ISL IS mt.0,85 | Barra esag.corta | Barre | Stange | Bar | 47 | 450500036,00 | 1 | IS mt.2,05 | Rotore a "U" | Rotor | Rotor | Rotor |
| 18 | 350080080,03 | 1 | ISL IS mt.0,85 | Barra esag.corta rinf. | Barre | Stange | Bar | 47 | 450500037,00 | 1 | IS mt.2,30 | Rotore a "U" | Rotor | Rotor | Rotor |
| 18 | 350080073,04 | 1 | ISL IS mt.1,05 | Barra esag.corta | Barre | Stange | Bar | 47 | 450500059,00 | 1 | IS mt.2,50 | Rotore a "U" | Rotor | Rotor | Rotor |
| 18 | 350080073,03 | 1 | ISL IS mt.1,05 | Barra esag.corta rinf. | Barre | Stange | Bar | 48 | 103140089,00 | 12 | M14x30x1,5 | Vite | Vis | Schraube | Bolt |
| 18 | 350080074,04 | 1 | ISL IS mt.1,30 | Barra esag.corta | Barre | Stange | Bar | 49 | 350250022,01 | 1 | ISL IS | Flangia supp.dx TN | Flasque | Flansch | Housing |
| 18 | 350080074,03 | 1 | ISL IS mt.1,30 | Barra esag.corta rinf. | Barre | Stange | Bar | 50 | 450370023,01 | 1 | ISL IS | Mozzo dx d. 50 | Moyeu | Nabe | Rotor shaft |
| 18 | 350080070,04 | 1 | ISL IS mt.1,55 | Barra esag.corta | Barre | Stange | Bar | 51 | 103040030,00 | 1> | M14x1,5 8G zinc. | Dado | Eccrou | Nut | |
| 18 | 350080069,10 | 1 | ISL IS mt.1,72 | Barra esag.corta | Barre | Stange | Bar | 52 | 116010050,00 | 1> | F50 | Zappa | Couteau | Blade | |
| 18 | 350080069,05 | 1 | ISL IS mt.1,72 | Barra esag.corta | Barre | Stange | Bar | 52 | 16010050,02 | 1> | F50,02 | Zappa | Couteau | Blade | |
| 18 | 350080069,04 | 1 | IS mt.1,80 | Barra esag.corta rinf. | Barre | Stange | Bar | 53 | 103140098,00 | 1> | M14x45x1,5 12,9 | Vite | Vis | Schraube | Bolt |
| 18 | 350080069,04 | 1 | IS mt.1,80 | Barra esag.corta | Barre | Stange | Bar | 54 | 350210049,00 | 1 | ISL IS | Distanziale barra | Entretoise | Spacer | |
| 18 | 350080069,03 | 1 | IS mt.1,80 | Barra esag.corta rinf. | Barre | Stange | Bar | 55 | 350210050,00 | 1 | ISL IS | Distanziale barra sx | Entretoise | Spacer | |
| 18 | 350080071,04 | 1 | IS mt.2,05 | Barra esag.corta | Barre | Stange | Bar | 56 | 103100022,00 | 21 | diam. 10 grower | Rondella | Rondelle | Scheibe | Washer |
| 18 | 350080071,03 | 1 | IS mt.2,05 | Barra esag.corta rinf. | Barre | Stange | Bar | 57 | 103040018,00 | 6 | M 10x1,25 | Dado | Eccrou | Nut | |
| 18 | 350080072,04 | 1 | IS mt.2,30 | Barra esag.corta | Barre | Stange | Bar | 58 | 450170050,00 | 1 | ISL IS | Coperchio flangia | Couvercle | Cover | |
| 18 | 350080072,03 | 1 | IS mt.2,30 | Barra esag.corta rinf. | Barre | Stange | Bar | 59 | 350330020,00 | 1 | ISL IS | Guarniz. coperchio | Joint | Gasket | |
| 18 | 350080075,04 | 1 | IS mt.2,50 | Barra esag.corta | Barre | Stange | Bar | 60 | 103140021,00 | 9 | M 8x20 | Vite | Vis | Schraube | Bolt |
| 18 | 350080075,03 | 1 | IS mt.2,50 | Barra esag.corta rinf. | Barre | Stange | Bar | 61 | 103100020,00 | 6 | diam. 8 grower | Rondella | Rondelle | Scheibe | Washer |
| 19 | 350770010,00 | 2 | ISL IS | Staffa riduttore | Support | Buegel | Bracket | | | | | | | | |
| 20 | 350330017,00 | 1 | ISL IS | Guarnizione riduttore | Joint | Dichtung | Gasket | | | | | | | | |
| 21 | 320900001,00 | 1 | ISL IS | Tappo carter | Bouchon | Pfropfen | Oilplug | | | | | | | | |
| 22 | 103040067,00 | 18 | M10x1,25 metalibl. | Dado | Eccrou | Mutter | Nut | | | | | | | | |
| 23 | 450480001,00 | 1 | ISL IS | Registro tendicatena | Regulation | Kettenreglen | Adj.chainskid | | | | | | | | |
| 24 | 103040042,00 | 1 | M18 basso | Dado | Eccrou | Mutter | Nut | | | | | | | | |
| 25 | 103120002,00 | 2 | M16x1,5 | Tappo conico | Bouchon | Pfropfen | Plug | | | | | | | | |
| 26 | 350330008,01 | 1 | IS ISR ZP | Guarnizione carter | Joint | Dichtung | Gasket | | | | | | | | |
| 27 | 450170004,01 | 1 | IS ISR ZP | Coperchio catena | Couvercle | Kettendeckel | Chainskid shd | | | | | | | | |

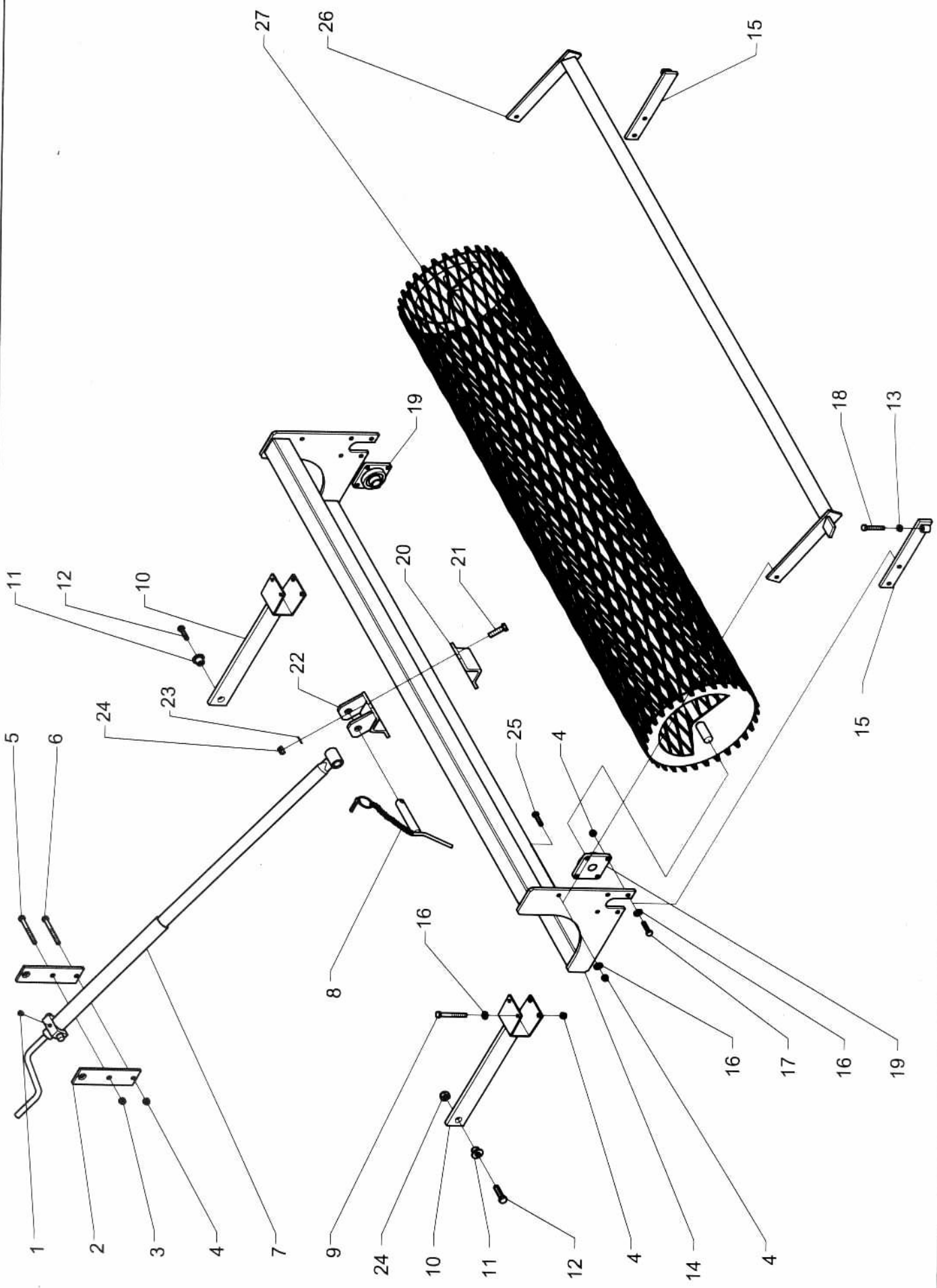


IS

TRANSMISSION
TRANSMISSION
SEITLICHER ANTRIEB

931

TRASMISSIONE
TRANSMISSION
SEITLICHER ANTRIEB



RULLO A GRIGLIA

ROULEAU TIEFFENWALZE ROLLER

ISL - IS - ISR

932

| RIF. | CODICE | Q.TA' | SIGLA | DENOMINAZIONE | F | D | GB | RIF. | CODICE | Q.TA' | SIGLA | DENOMINAZIONE | F | D | GB |
|------|--------------|-------|----------------|-------------------------------|-----------|-------------|---------------|------|-------------|-------|----------------|-----------------|---------|--------|--------|
| 1 | 103.090.002 | 1 | M8X1 | Ingrassatore | Graisseur | Fettbuesche | Grease nipple | 27 | 450.510.057 | 1 | IS mt.1,80 | Rullo a griglia | Rouleau | Walzen | Roller |
| 2 | 350.580.100 | 2 | ISL-IS-ISR | Platto attacco registro rullo | Plaque | Platte | Plate | 27 | 450.510.058 | 1 | IS-ISR mt.2,05 | Rullo a griglia | Rouleau | Walzen | Roller |
| 3 | 103.040.070 | 1 | M14 aut.basso | Dado | Ecou | Mutter | Nut | 27 | 450.510.063 | 1 | IS-ISR mt.2,30 | Rullo a griglia | Rouleau | Walzen | Roller |
| 4 | 103.040.068 | 15 | M12 aut.basso | Dado | Ecou | Mutter | Nut | 27 | 450.510.066 | 1 | IS-ISR mt.2,50 | Rullo a griglia | Rouleau | Walzen | Roller |
| 5 | 103.150.115 | 1 | M14X130 z. | Vite | Vis | Schraube | Bolt | 27 | 450.510.067 | 1 | IS-ISR mt.2,80 | Rullo a griglia | Rouleau | Walzen | Roller |
| 6 | 103.150.095 | 1 | M12X120 z. | Vite | Vis | Schraube | Bolt | 27 | 450.510.072 | 1 | IS-ISR mt.3,00 | Rullo a griglia | Rouleau | Walzen | Roller |
| 7 | 550.220.011 | 1 | ISL-IS-ISR | Registro rullo centrale | Regulator | Regler | Adjuster | 27 | 450.510.074 | 1 | IS-ISR mt.4,00 | Rullo a griglia | Rouleau | Walzen | Roller |
| 8 | 320.560.017 | 1 | diam. 25 | Perno | Pivot | Zapfen | Pin | 27 | | | | | | | |
| 9 | 103.140.086 | 4 | M12X100 z. | Vite | Vis | Schraube | Bolt | | | | | | | | |
| 10 | 450.090.091 | 2 | ISL-IS-ISR | Braccio rullo | Bras | Arm | Arm | | | | | | | | |
| 11 | 350.090.069 | 2 | ISL-IS-ISR | Boccola attacco rullo | Douille | Busche | Bushing | | | | | | | | |
| 12 | 103.150.128 | 2 | M16X55 Z. | Vite | Vis | Schraube | Bolt | | | | | | | | |
| 13 | 103.040.022 | 1 | M12 zinc.alto | Dado | Ecou | Mutter | Nut | | | | | | | | |
| 14 | 450690038.01 | 1 | ISL-IS mt.0,85 | Traversa rullo | Plaque | Platte | Plate | | | | | | | | |
| 14 | 450.690.038 | 1 | ISL-IS mt.1,05 | Traversa rullo | Plaque | Platte | Plate | | | | | | | | |
| 14 | 450.690.039 | 1 | ISL-IS mt.1,30 | Traversa rullo | Plaque | Platte | Plate | | | | | | | | |
| 14 | 450.690.045 | 1 | ISL-IS mt.1,40 | Traversa rullo | Plaque | Platte | Plate | | | | | | | | |
| 14 | 450.690.040 | 1 | ISL-IS mt.1,55 | Traversa rullo | Plaque | Platte | Plate | | | | | | | | |
| 14 | 450.690.041 | 1 | IS mt.1,80 | Traversa rullo | Plaque | Platte | Plate | | | | | | | | |
| 14 | 450.690.042 | 1 | IS-ISR mt.2,05 | Traversa rullo | Plaque | Platte | Plate | | | | | | | | |
| 14 | 450.690.043 | 1 | IS-ISR mt.2,30 | Traversa rullo | Plaque | Platte | Plate | | | | | | | | |
| 14 | 450.690.044 | 1 | IS-ISR mt.2,50 | Traversa rullo | Plaque | Platte | Plate | | | | | | | | |
| 14 | 450.690.054 | 1 | IS-ISR mt.2,80 | Traversa rullo | Plaque | Platte | Plate | | | | | | | | |
| 14 | 450.690.057 | 1 | IS-ISR mt.3,00 | Traversa rullo | Plaque | Platte | Plate | | | | | | | | |
| 14 | 450690057.01 | 1 | IS-ISR mt.4,00 | Traversa rullo | Plaque | Platte | Plate | | | | | | | | |
| 15 | 450.610.163 | 2 | ISXL-ISL-IS | Supporto registro rullo | Support | Halter | Support | | | | | | | | |
| 16 | 103.100.010 | 14 | diam.12 z. | Rondella piana | Rondelle | Scheibe | Washer | | | | | | | | |
| 17 | 103.150.081 | 8 | M12X60 z. | Vite | Vis | Schraube | Bolt | | | | | | | | |
| 18 | 103.150.084 | 1 | M12X70 z. | Vite | Vis | Schraube | Bolt | | | | | | | | |
| 19 | 104.040.006 | 2 | D.30 UCF206 | Supporto a sfere | Roulement | Lager | Bearing | | | | | | | | |
| 20 | 350.770.012 | 1 | ISL-IS-ISR | Staffa mobile | Bride | Buegel | Bracket | | | | | | | | |
| 21 | 103.150.126 | 2 | M16X70 z. | Vite | Vis | Schraube | Bolt | | | | | | | | |
| 22 | 450.040.039 | 1 | ISL-IS-ISR | Attacco rullo posteriore | Support | Halter | Support | | | | | | | | |
| 23 | 103.100.014 | 2 | diam.16 z. | Rondella piana | Rondelle | Scheibe | Washer | | | | | | | | |
| 24 | 103.040.072 | 4 | M16 aut.basso | Dado | Ecou | Mutter | Nut | | | | | | | | |
| 25 | 103.150.075 | 2 | M12X45 z. | Vite | Vis | Schraube | Bolt | | | | | | | | |
| 26 | 450690047.01 | 1 | ISL-IS mt.0,85 | Traversa pulisci rullo | Plaque | Platte | Plate | | | | | | | | |
| 26 | 450.690.047 | 1 | ISL-IS mt.1,05 | Traversa pulisci rullo | Plaque | Platte | Plate | | | | | | | | |
| 26 | 450.690.048 | 1 | ISL-IS mt.1,30 | Traversa pulisci rullo | Plaque | Platte | Plate | | | | | | | | |
| 26 | 450.690.058 | 1 | ISL-IS mt.1,40 | Traversa pulisci rullo | Plaque | Platte | Plate | | | | | | | | |
| 26 | 450.690.049 | 1 | ISL-IS mt.1,55 | Traversa pulisci rullo | Plaque | Platte | Plate | | | | | | | | |
| 26 | 450.690.050 | 1 | IS mt.1,80 | Traversa pulisci rullo | Plaque | Platte | Plate | | | | | | | | |
| 26 | 450.690.051 | 1 | IS-ISR mt.2,05 | Traversa pulisci rullo | Plaque | Platte | Plate | | | | | | | | |
| 26 | 450.690.052 | 1 | IS-ISR mt.2,30 | Traversa pulisci rullo | Plaque | Platte | Plate | | | | | | | | |
| 26 | 450.690.053 | 1 | IS-ISR mt.2,50 | Traversa pulisci rullo | Plaque | Platte | Plate | | | | | | | | |
| 26 | 450.690.055 | 1 | IS-ISR mt.2,80 | Traversa pulisci rullo | Plaque | Platte | Plate | | | | | | | | |
| 26 | 450.690.056 | 1 | IS-ISR mt.3,00 | Traversa pulisci rullo | Plaque | Platte | Plate | | | | | | | | |
| 26 | 450690056.01 | 1 | IS-ISR mt.4,00 | Traversa pulisci rullo | Plaque | Platte | Plate | | | | | | | | |
| 27 | 450510065.01 | 1 | ISL-IS mt.0,85 | Rullo a griglia | Rouleau | Walzen | Roller | | | | | | | | |
| 27 | 450.510.065 | 1 | ISL-IS mt.1,05 | Rullo a griglia | Rouleau | Walzen | Roller | | | | | | | | |
| 27 | 450.510.055 | 1 | ISL-IS mt.1,30 | Rullo a griglia | Rouleau | Walzen | Roller | | | | | | | | |
| 27 | 450510055.01 | 1 | ISL-IS mt.1,40 | Rullo a griglia | Rouleau | Walzen | Roller | | | | | | | | |
| 27 | 450.510.056 | 1 | ISL-IS mt.1,55 | Rullo a griglia | Rouleau | Walzen | Roller | | | | | | | | |



IS ISL ISR

RULLO

ROULEAU

WALZEN

ROLLER

932