


RIF.	CODICE	QT.	SIGLA	DENOMINAZIONE	FR	D	GB	RIF.	CODICE	QT.	SIGLA	DENOMINAZIONE	FR	D	GB
1	103040068,00	15	M12	Dado autobloccante	Ecrou	Mutter	Boit	41	450610158,00	2	ISL IS	Supporto griglia	Supporto	Halter	Support
2	103100010,00	15	Diam.12 piana	Rondella	Rondelle	Scheibe	Washer	42	103100006,00	4	Diam.8 piana	Rondella	Rondelle	Scheibe	Washer
3	103140090,00	2	M12X90 z.	Vite	Vis	Schraube	Boit	43	103150001,00	2	cm.10	Cerniera	Charniere	Schraube	Hinge
4	350660029,00	1	ISL	Staffa	Etirer	Buegel	Bracket	44	103140095,00	8	M14X35X1,5	Vite	Vis	Schraube	Bolt
5	450650149,01	1	ISL 105	Telaio	Chassis	Rahmen	Frame	45	103040030,00	8	M14X1,5	Dado	Ecrou	Mutter	Nut
5	450650137,01	1	ISL 130	Telaio	Chassis	Rahmen	Frame	46	103100028,00	8	Diam.14 grower	Rondella	Rondelle	Scheibe	Washer
5	450650142,01	1	ISL 140	Telaio	Chassis	Rahmen	Frame	47	103100012,00	8	Diam.14 piana	Rondella	Rondelle	Scheibe	Washer
5	450650138,01	1	ISL 155	Telaio	Chassis	Rahmen	Frame	48	103150044,00	8	M10X30 z.	Vite	Vis	Schraube	Bolt
5	450650139,03	1	ISL 172	Telaio	Chassis	Rahmen	Frame	49	103100008,00	8	Diam.10 piana	Rondella	Rondelle	Scheibe	Washer
6	350150120,00	1	ISL IS 105	Coperchio	Couvercle	Deckel	Cover	50	103150084,00	2	M12X70 z.	Vite	Vis	Schraube	Bolt
6	350150050,01	1	ISL IS 130	Coperchio	Couvercle	Deckel	Cover	51	350572013,02	1	ISL	Plastr	Plaque	Platte	Plate
6	350150121,00	1	ISL IS 140	Coperchio	Couvercle	Deckel	Cover	52	103040067,00	8<	M10X1,25	Dado autobloccante	Ecrou	Mutter	Nut
6	350150051,01	1	ISL IS 155	Coperchio	Couvercle	Deckel	Cover	53	103150085,00	1	M12X70 t.filetto	Vite	Vis	Schraube	Bolt
6	350150065,10	1	ISL IS 172	Coperchio	Couvercle	Deckel	Cover	54	350470070,00	1	ISL IS	Molla x griglia	Ressort	Feder	Spring
7	350404044,00	1	ISL ZV	Lamiera	Plaque	Platte	Plate	55	350830014,00	1<	ISL IS	Trafil	Messer	Knife	
8	103040024,00	11	M12X1,25 z.	Dado	Ecrou	Mutter	Nut	56	550220018,00	2	ISL IS	Registro	Regler	Register	
9	103100026,00	8	Diam.12 grower	Rondella	Rondelle	Scheibe	Schraube	57	103040064,00	4	M8 metalblock	Dado	Mutter	Nut	
10	103100014,00	4	Diam.16 piana	Rondella	Rondelle	Scheibe	Washer	58	450280006,01	1	ISL IS 105	Griglia	Grille	Grille	
11	103150011,00	4	M8X25 z.	Vite	Vis	Schraube	Boit	58	450280001,01	1	ISL IS 130	Griglia	Vibrorost	Grille	
12	350620090,00	1	ISL 105	Protezione	Protection	Schutz	Protection	58	450280009,01	1	ISL IS 140	Griglia	Vibrorost	Grille	
12	350620091,00	1	ISL IS 130	Protezione	Protection	Schutz	Protection	58	450280002,01	1	ISL IS 155	Griglia	Vibrorost	Grille	
12	350620092,00	1	ISL IS 140	Protezione	Protection	Schutz	Protection	58	450280001,01	1	ISL IS 172	Griglia	Vibrorost	Grille	
12	350620093,00	1	ISL IS 155	Protezione	Protection	Schutz	Protection	58	450280014,01	1	ISL IS 172	Griglia	Vibrorost	Grille	
12	350620094,10	1	ISL IS 172	Protezione	Protection	Schutz	Protection	58							
13	103150098,00	5	M14X35 z.	Vite	Vis	Schraube	Boit	55							
14	103040070,00	6	M14	Dado autobloccante	Ecrou	Mutter	Nut	56							
15	103150081,00	1	M12X60 z.	Vite	Vis	Schraube	Boit	57							
16	420610106,00	1	ISL IS	Supporto	Support	Halter	Support	57							
17	420610104,00	1	ISL IS	Gancio	Crocher	Haken	Hook	58							
18	350470029,00	1	ISL IS	Molla	Ressort	Feder	Spring	58							
19	350560035,00	2	ISL IS	Perno	Pivot	Zapfen	Pin	58							
20	410410002,00	2	Diam.22	Perno	Pivot	Zapfen	Pin	58							
21	350580283,00	1	ISL IS	Piatto tirante molla	Plat	Platte	Plate	58							
22	103140074,00	8	M12X35X1,25	Vite	Vis	Schraube	Boit	58							
23	103150072,00	8	M12X35 z.	Vite	Vis	Schraube	Boit	58							
24	103040022,00	1	M12	Dado	Ecrou	Mutter	Nut	58							
25	450040023,03	2	ISL IS	Attacco	Support	Halter	Support	58							
26	103040072,00	4	M16	Dado	Ecrou	Mutter	Nut	58							
27	350770012,02	2	ISL IS	Staffa	Bride	Buegel	bracket	58							
28	103140141,00	4	M16X60 z.	Vite	Vis	Schraube	Boit	58							
29	350580302,00	3<	ISL IS	Piatto fermo griglia	Plat	Platte	Plate	58							
30	450570010,00	2	ISL IS	Slitino inferiore	Protection	Schutz	Protection	58							
31	103040078,00	2	M20X1,5	Dado	Ecrou	Mutter	Nut	58							
32	103150101,00	1	M14X45 z.	Vite	Vis	Schraube	Boit	58							
33	350402044,00	1	ISL ZV	Lamiera	Plaque	Platte	Plate	58							
34	103150093,00	4	M12X110 z.	Vite	Vis	Schraube	Boit	58							
35	350570274,00	2	ISL IS	Piatto attacco	Plat	Platte	Plate	58							
36	103100016,00	2	Diam.20 piana	Rondella	Rondelle	Scheibe	Washer	58							
37	450450013,00	2	ISL 085>IS 140	Protezione	Protection	Schutz	Protection	58							
37	450450014,00	2	ISL IS 155	Protezione	Protection	Schutz	Protection	58							
38	350574012,02	1	ISL	Plastr	Plaque	Platte	Plate	58							
39	350570083,00	1	ISL IS	Plastr	Plaque	Platte	Plate	58							
40	450450023,00	1	ISL IS	Protezione	Protection	Schutz	Protection	58							



ISL

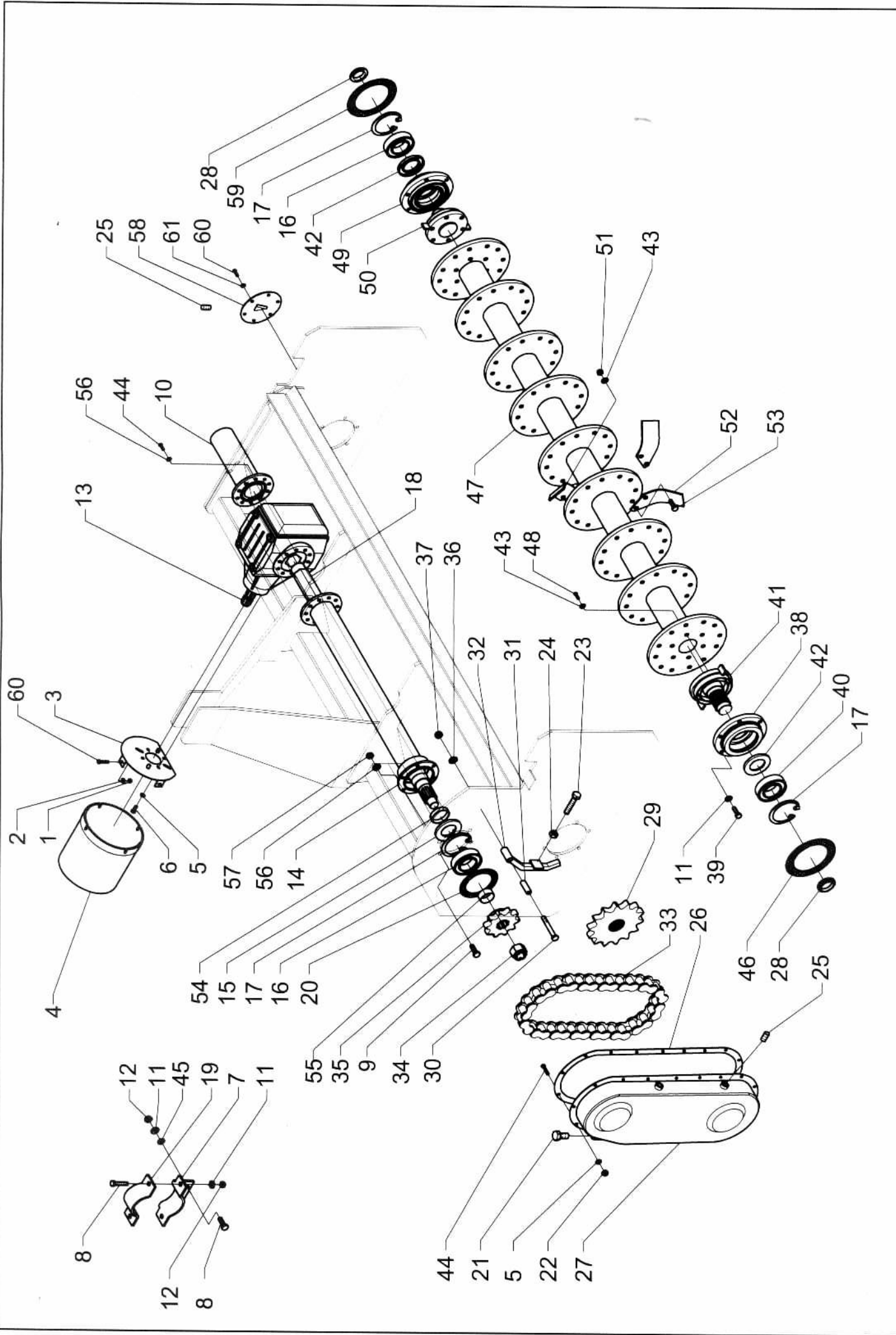
TELAIO

CHASSIS

RAHMEN

FRAME

920



TRASMISSIONE

TRASMISSION

ISL

921

REF.	CODICE	QT	SIGLA	DENOMINAZIONE	F	D	GB	REF.	CODICE	QT	SIGLA	DENOMINAZIONE	F	D	GB
1	103040008,00	3	M8 zinc.alto	Dado	Ecrou	Mutter	Nut	40	104030051,00	1	OR.22212	Cuscinetto a rulli	Roulement	Lager	Bearing
2	103100006,00	3	diam.8 zinc.piana	Rondella	Rondelle	Scheibe	Washer	41	450370024,01	1	ISL IS	Mozzo sx	Moyeu	Nabe	Rotor shaft
3	450040033,00	1	ISL IS	Attacco prot.cardano	Attache	Halter	Support	42	109040020,00	2	90/70-10	Parabolio	Para-huile	Oelabdichtung	Oilseal
4	350620044,00	1	ISL IS	protezione cardano	Protection	Schutz	Protection	43	103100028,00	12+1>	diam.14 grower	Rondella	Rondelle	Scheibe	Washer
5	103100008,00	21	diam.10 zinc.piana	Rondella	Rondelle	Scheibe	Washer	44	103140055,00	33	M10x30X1,25	Vite	Vis	Schraube	Bolt
6	103150034,00	2	M10x20 zinc.	Vite	Vis	Schraube	Bolt	45	103100010,00	4	diam.12 piana	Rondella	Rondelle	Scheibe	Washer
7	450610130,00	2	ISL IS	Supporto riduttore	Support	Halter	Support	46	350330012,00	1	ISL IS	Guarnizione flangia	Joint	Dichtung	Gasket
8	103140077,00	8	M12x40x1,25	Vite	Vis	Schraube	Bolt	47	450500113,00	1	ISL IS mt.0,85	Rotore a "U"	Rotor	Rotor	
9	103140059,00	6	M10x35x1,25	Vite	Vis	Schraube	Bolt	47	450500109,00	1	ISL IS mt.1,05	Rotore a "U"	Rotor	Rotor	
10	450440031,00	1	ISL IS	Prolunga rid. dx	Support	Rohr	Support	47	450500033,00	1	ISL IS mt.1,30	Rotore a "U"	Rotor	Rotor	
11	103100026,00	20	diam.12 grower	Rondella	Rondelle	Scheibe	Washer	47	450500111,00	1	ISL IS mt.1,40	Rotore a "U"	Rotor	Rotor	
12	103040024,00	8	M12x1,25 8G	Dado	Ecrou	Mutter	Nut	47	450500034,00	1	ISL IS mt.1,55	Rotore a "U"	Rotor	Rotor	
13	112050051,00	1	es.50 IS	Riduttore	Reducteur	Getriebe	Gearbox	47	450500114,00	1	ISL IS mt.1,72	Rotore a "U"	Rotor	Rotor	
14	450440041,01	1	ISL IS mt.0,85	Prolunga rid. sx	Tuyau	Rohr	Support	48	103140089,00	12	M14x30x1,5	Vite	Vis	Schraube	
14	450440041,00	1	ISL IS mt.1,05	Prolunga rid. sx	Tuyau	Rohr	Support	49	350250022,01	1	ISL IS	Flangia supp.dx	Fiasque	Housing	
14	450440032,00	1	ISL IS mt.1,30	Prolunga rid. sx	Tuyau	Rohr	Support	50	450370023,01	1	ISL IS	Mozzo dx	Moyeu	Rotor shaft	
14	450040033,00	1	ISL IS mt.1,40	Prolunga rid. sx	Tuyau	Rohr	Support	51	103040030,00	1>	M14x1,5 8G zinc.	Dado	Ecrou	Nut	
14	450440034,00	1	ISL IS mt.1,55	Prolunga rid. sx	Tuyau	Rohr	Support	52	116010050,00	1>	F50	Zappa	Couteau	Blade	
14	450440035,00	1	ISL IS mt.1,72	Prolunga rid. sx	Tuyau	Rohr	Support	52	116010050,01	1>	F50,01	Zappa	Couteau	Blade	
15	109040023,00	1	100/60-13	Parabolio	Para-huile	Oelabdichtung	Oilseal	53	103140089,00	1>	M14x45x1,5 12,9	Vite	Vis	Schraube	Bolt
16	104010012,00	2	6310 z	Cuscinetto	Roulement	Lager	Bearing	54	350210049,00	1	ISL IS	Distanziale barra	Entretoise	Distanzstueck	Spacer
17	103010008,00	3	1110	Anello seeger	Bague seeger	Seegering	Seegering	55	350210050,00	1	ISL IS	Distanziale barra sx	Entretoise	Distanzstueck	Spacer
18	350080080,04	1	ISL IS mt.0,85	Barra esag.corta	Barre	Stange	Bar	56	103100022,00	21	diam. 10 grower	Rondella	Scheibe	Washer	
18	350080080,03	1	ISL IS mt.0,85	Barra esag.corta rinf.	Barre	Stange	Bar	57	103040018,00	6	M 10x1,25	Dado	Ecrou	Nut	
18	350080073,04	1	ISL IS mt.1,05	Barra esag.corta	Barre	Stange	Bar	58	450170050,00	1	ISL IS	Coperchio flangia	Couvercle	Cover	
18	350080073,03	1	ISL IS mt.1,05	Barra esag.corta rinf.	Barre	Stange	Bar	59	350330020,00	1	ISL IS	Guarniz. coperchio	Joint	Gasket	
18	350080074,04	1	ISL IS mt.1,30	Barra esag.corta	Barre	Stange	Bar	60	103140021,00	9	M 8x20	Vite	Vis	Bolt	
18	350080074,03	1	ISL IS mt.1,30	Barra esag.corta rinf.	Barre	Stange	Bar	61	103100020,00	6	diam. 8 grower	Rondella	Scheibe	Washer	
18	350080070,04	1	ISL IS mt.1,55	Barra esag.corta	Barre	Stange	Bar								
18	350080070,03	1	ISL IS mt.1,55	Barra esag.corta rinf.	Barre	Stange	Bar								
18	350080069,10	1	ISL IS mt.1,72	Barra esag.corta	Barre	Stange	Bar								
18	350080069,05	1	ISL IS mt.1,72	Barra esag.corta rinf.	Barre	Stange	Bar								
19	350770010,00	2	ISL IS	Staffa riduttore	Support	Buegel	Bracket								
20	350330017,00	1	ISL IS	Guarnizione riduttore	Joint	Dichtung	Gasket								
21	320800001,00	1	ISL IS	Tappo carter	Bouchon	Pfropfen	Oliplug								
22	103040067,00	18	M10x1,25 metalblock	Dado	Ecrou	Mutter	Nut								
23	450480001,00	1	ISL IS	Registro tendicatenena	Regulation	Kettenreglen	Adj.chainskid								
24	103040042,00	1	M18 basso	Dado	Ecrou	Mutter	Nut								
25	103120002,00	2	M16x1,5	Tappo conico	Bouchon	Pfropfen	Plug								
26	350330007,00	1	ISL ZM	Guarnizione carter	Joint	Dichtung	Gasket								
27	450170002,00	1	ISL ZM	Coperchio catena	Couvercle	Kettendeckel	Chainskid shd								
28	103050012,00	2	M50x1,5	Ghiera autobloccante	Collier	Mutter	zockbush								
29	350600018,00	1	Z13 ASA 120	Pignone	Pignon	Ritzel	Sproket								
30	103150107,00	1	M14x90	Vite	Vis	Schraube	Bolt								
31	350090004,00	1	ISL IS	Boccola tendicatenena	Douille	Busche	Bushing								
32	450660007,00	1	ISL IS	Tendicatenena	Tend. chaine	Kettenspanner	Chainskid								
33	112020070,00	1	ASA120 HE 34p.	Catena	Chaine	Kette	Chain								
34	103040057,00	1	M33x2	Dado ad intagli	Ecrou	Mutter	Nut								
35	350600016,00	1	Z10 asa 120	Pignone	Pinion	Ritzel	Sproket								
36	103100012,00	1	diam.14 piana	Rondella	Rondelle	Scheibe	Washer								
37	103040070,00	1	M14 autob.basso	Dado	Ecrou	Mutter	Nut								
38	350250021,01	1	ISL IS	Flangia supp.sx	Fiasque	Flansch	Housing								
39	103140071,00	12	M12 X30x1,25	Vite	Ecrou	Schraube	Bolt								



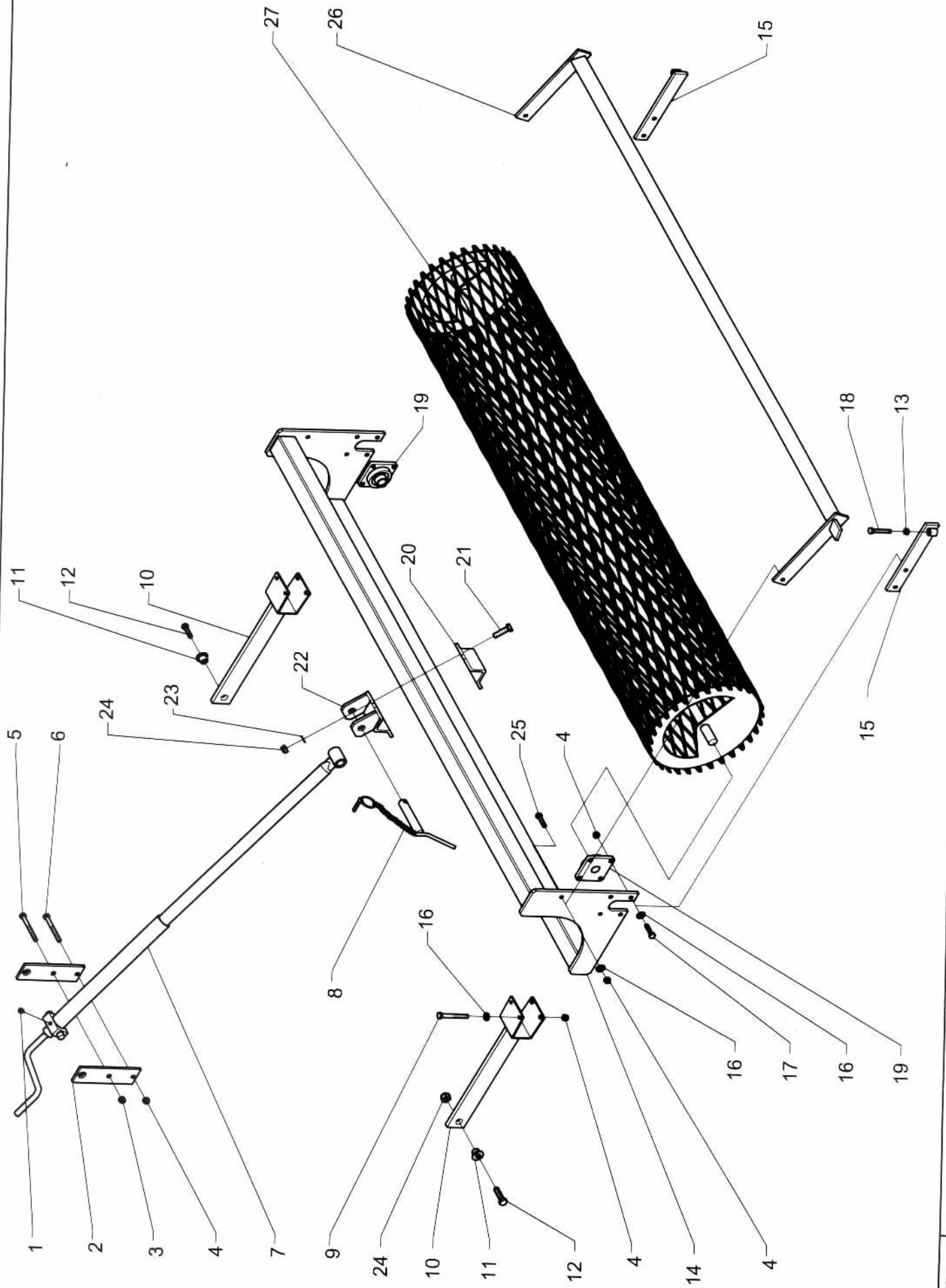
ISL

TRANSMISSION

TRANSMISSIONE

SEITLICHER ANTRIEB

921




RULLO A GRIGLIA

ROULEAU TIEFENWALZE ROLLER

ISL - IS - ISR

932

RIF.	CODICE	Q.TA'	SIGLA	DENOMINAZIONE	F	D	GB	RIF.	CODICE	Q.TA'	SIGLA	DENOMINAZIONE	F	D	GB
1	103.090.000	1	M8X1	Ingrassatore	Graisneur	Fettbuesche	Grease nipple	27	450.510.057	1	IS mt.1.80	Rullo a griglia	Rouleau	Waizen	Roller
2	350.580.102	2	ISL-IS-ISR	Piatto attacco registro rullo	Plaque	Platte	Plate	27	450.510.058	1	IS-ISR mt.2.05	Rullo a griglia	Rouleau	Waizen	Roller
3	103.040.070	1	M14 aut.basso	Dado	Ecrou	Mutter	Nut	27	450.510.063	1	IS-ISR mt.2.30	Rullo a griglia	Rouleau	Waizen	Roller
4	103.040.068	15	M12 aut.basso	Dado	Ecrou	Mutter	Nut	27	450.510.066	1	IS-ISR mt.2.50	Rullo a griglia	Rouleau	Waizen	Roller
5	103.150.115	1	M14X130 z.	Vite	Vis	Schraube	Bolt	27	450.510.067	1	IS-ISR mt.2.80	Rullo a griglia	Rouleau	Waizen	Roller
6	103.150.095	1	M12X120 z.	Vite	Vis	Schraube	Bolt	27	450.510.072	1	IS-ISR mt.3.00	Rullo a griglia	Rouleau	Waizen	Roller
7	550.220.011	1	ISL-IS-ISR	Registro rullo centrale	Regulator	Regler	Adjuster	27	450.510.074	1	IS-ISR mt.4.00	Rullo a griglia	Rouleau	Waizen	Roller
8	320.560.017	1	diam. 25	Perno	Pivot	Zapfen	Pin	27							
9	103.140.086	4	M12X100 z.	Vite	Vis	Schraube	Bolt								
10	450.090.091	2	ISL-IS-ISR	Braccio rullo	Bras	Arm	Arm								
11	350.090.069	2	ISL-IS-ISR	Boccola attacco rullo	Douille	Busche	Bushing								
12	103.150.128	2	M16X55 z.	Vite	Vis	Schraube	Bolt								
13	103.040.022	1	M12 zinc.alto	Dado	Ecrou	Mutter	Nut								
14	450690038.01	1	ISL-IS mt.0.85	Traversa rullo	Plaque	Platte	Plate								
14	450.690.038	1	ISL-IS mt.1.05	Traversa rullo	Plaque	Platte	Plate								
14	450.690.039	1	ISL-IS mt.1.30	Traversa rullo	Plaque	Platte	Plate								
14	450.690.045	1	ISL-IS mt.1.40	Traversa rullo	Plaque	Platte	Plate								
14	450.690.040	1	ISL-IS mt.1.55	Traversa rullo	Plaque	Platte	Plate								
14	450.690.041	1	IS mt.1.80	Traversa rullo	Plaque	Platte	Plate								
14	450.690.042	1	IS-ISR mt.2.05	Traversa rullo	Plaque	Platte	Plate								
14	450.690.043	1	IS-ISR mt.2.30	Traversa rullo	Plaque	Platte	Plate								
14	450.690.044	1	IS-ISR mt.2.50	Traversa rullo	Plaque	Platte	Plate								
14	450.690.054	1	IS-ISR mt.2.80	Traversa rullo	Plaque	Platte	Plate								
14	450.690.057	1	IS-ISR mt.3.00	Traversa rullo	Plaque	Platte	Plate								
14	450690057.01	1	IS-ISR mt.4.00	Traversa rullo	Plaque	Platte	Plate								
15	450.610.163	2	ISXL-ISL-IS	Supporto registro rullo	Support	Halter	Support								
16	103.100.010	14	diam.12 z.	Rondella piana	Rondelle	Scheibe	Washer								
17	103.150.081	8	M12X60 z.	Vite	Vis	Schraube	Bolt								
18	103.150.084	1	M12X70 z.	Vite	Vis	Schraube	Bolt								
19	104.040.006	2	D.30 UCF206	Supporto a sfere	Roulement	Lager	Bearing								
20	350.770.012	1	ISL-IS-ISR	Siaffia mobile	Bride	Buegel	Bracket								
21	103.150.126	2	M16X70 z.	Vite	Vis	Schraube	Bolt								
22	450.040.039	1	ISL-IS-ISR	Attacco rullo posteriore	Support	Halter	Support								
23	103.100.014	2	diam.16 z.	Rondella piana	Rondelle	Scheibe	Washer								
24	103.040.072	4	M16 aut.basso	Dado	Ecrou	Mutter	Nut								
25	103.150.075	2	M12X45 z.	Vite	Vis	Schraube	Bolt								
26	450690047.01	1	ISL-IS mt.0.85	Traversa pulisci rullo	Plaque	Platte	Plate								
26	450.690.047	1	ISL-IS mt.1.05	Traversa pulisci rullo	Plaque	Platte	Plate								
26	450.690.048	1	ISL-IS mt.1.30	Traversa pulisci rullo	Plaque	Platte	Plate								
26	450.690.058	1	ISL-IS mt.1.40	Traversa pulisci rullo	Plaque	Platte	Plate								
26	450.690.049	1	ISL-IS mt.1.55	Traversa pulisci rullo	Plaque	Platte	Plate								
26	450.690.050	1	IS mt.1.80	Traversa pulisci rullo	Plaque	Platte	Plate								
26	450.690.051	1	IS-ISR mt.2.05	Traversa pulisci rullo	Plaque	Platte	Plate								
26	450.690.052	1	IS-ISR mt.2.30	Traversa pulisci rullo	Plaque	Platte	Plate								
26	450.690.053	1	IS-ISR mt.2.50	Traversa pulisci rullo	Plaque	Platte	Plate								
26	450.690.055	1	IS-ISR mt.2.80	Traversa pulisci rullo	Plaque	Platte	Plate								
26	450.690.056	1	IS-ISR mt.3.00	Traversa pulisci rullo	Plaque	Platte	Plate								
26	450690056.01	1	IS-ISR mt.4.00	Traversa pulisci rullo	Plaque	Platte	Plate								
27	450510065.01	1	ISL-IS mt.0.85	Rullo a griglia	Rouleau	Waizen	Roller								
27	450.510.065	1	ISL-IS mt.1.05	Rullo a griglia	Rouleau	Waizen	Roller								
27	450.510.055	1	ISL-IS mt.1.30	Rullo a griglia	Rouleau	Waizen	Roller								
27	450510055.01	1	ISL-IS mt.1.40	Rullo a griglia	Rouleau	Waizen	Roller								
27	450.510.056	1	ISL-IS mt.1.55	Rullo a griglia	Rouleau	Waizen	Roller								



IS ISL ISR

ROULEAU RULLO ROULEAU

WALZEN WÄLZEN

ROLLER ROLLER

932